



# Drip Points

<http://www.nia.org>

Quarterly Magazine of the National Insulator Association

Volume 42 • No. 3 • Spring 2015





# In this issue of Drip Points:



## Board Member Reports

Editor   Shaun Kotlarsky .....	NIA# 4993 .....	Page 1
President   Don Briel .....	NIA# 7218 .....	Page 2
Western Region VP   Ron Yuhas .....	NIA# 1993 .....	Page 3
Central Region VP   Bear Spitler .....	NIA# 8803 .....	Page 4
Eastern Region VP   Matt Grayson .....	NIA# 387 .....	Page 5
Executive Secretary   Steve Roberts .....	NIA# 7935 .....	Page 6
Membership Director   Vickie McConnachie .....	NIA# 8395 .....	Page 7
Treasurer   Bill Rohde .....	NIA# 1219 .....	Page 8
Information Director   Christian Willis .....	NIA# 5185 .....	Page 9
NIA Promotions Chair   Jim White .....	NIA# 1127 .....	Page 10
Jacque Linscott-Barnes   Research & Education .....	NIA# 1380 .....	Page 12
Scholarship Committee   Kay Bryant .....	NIA# 4099 .....	Page 13

## Articles

Hemingray Carnival Glass .....	By Shaun Kotlarsky .....	Page 14
Southern Bells (ST-2270) .....	By Jeff Kraemer .....	Page 16
Insulator Hunting in Mexico .....	By Dale and Art Huber .....	Page 18
The CD 303/310 Hemingray Muncie “The Gerry Insulator” .	By Doug Rusher .....	Page 20
The Most Important Porcelain Insulator You’ve Never Heard Of.	By Steve Coffman .....	Page 28
Kansas Signal Cache .....	By Bob Schwartz .....	Page 30

## NIA Products, Advertising & Contact info.

SPRING 2015 NIA Products .....	Page 31
Membership Application & Renewal Form .....	Page 33
Advertising Information .....	Page 34
Advertising .....	Page 35
Upcoming Shows .....	Page 36
NIA Board & Chair Contact Info. ....	Page 41

### On the cover:

Amazing Painting-Diorama depicting Installation of first high voltage power line in Helena, MT. See the article The CD 303/310 Hemingray Muncie “The Gerry Insulator” on page 20 for more details.

### Do you want to keep Drip Points full color?

You or your club can sponsor the color printing! For more information contact Don Briel or Lou Hall:

President | **Don Briel** NIA# 7218  
[President@nia.org](mailto:President@nia.org) or (435) 753-5786

First Past President | **Lou Hall** NIA# 7185  
[1stpastpres@nia.org](mailto:1stpastpres@nia.org) or (559) 435-1740

The NIA is an 501(3)(c) charitable organization. This means your donations are tax deductible.

### Copyright 2015 by National Insulator Association

All rights reserved. This magazine (“Drip Points”) or any part thereof may not be reproduced in any form without the prior written permission of the National Insulator Association. Page layout and design by Jivey Designs.





### Drip Points Magazine 2015

As you can see I went with a purple for the 2015 color. I figured many of us are just coming out of a nasty winter and purple is cheerful.

Lots of good articles in the works for 2015! You will see some amazing examples of this in this issue of Drip Points. Including yet another killer article from Doug Rusher on Muncies. Being a Hemingray collector this is a topic near and dear to me.

If you have a insulator related topic (Specialty collection, hunt, study etc.) that you would like to share, get in contact with me as I am always looking for interesting content for the magazine.

### CD 304/310 with original tie wire?

I just bought what think is the coolest desk display pieces I have ever seen. It is a CD 303/310 with what looks to be the original copper tie wire attached! It was recovered at an auction in New York. Beyond that I have no history on the piece. Is the tie wire authentic or something done long ago for a display? We may never know. What we do know is it makes an impressive display! I figured readers of Drip Points may enjoy seeing it.

### Hemingray.net Update

Over the winter I completely redesigned my website dedicated to Hemingray Glass Co. [Hemingray.net](http://Hemingray.net) V5.0. It is the first hobby site to use technology known as "responsive design," what that means is it will dynamically change layout to best fit the device you are viewing it on such as a smart phone or tablet or Computer. Also optimized for HiDPI displays

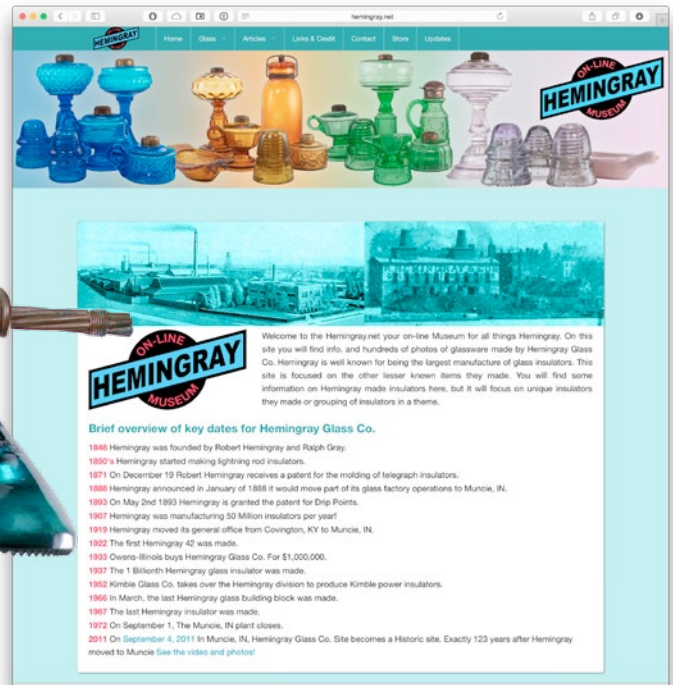
I also added lots of new content and expanding the insulator section. LOTS more coming so stay tuned.

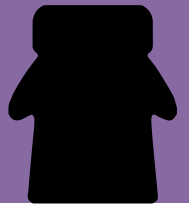
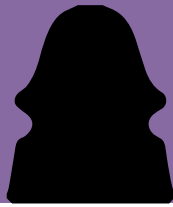
I plan on adding a lot more articles about Hemingray to the site to ensure this info is publicly available to anyone with a passion for Hemingray to find. Including scans of some original paperwork and vintage advertising.

If you have anything to contribute to the site please contact me. I feel it is important for information about the hobby to be freely available to those who want it.

If you have original paperwork I can scan safely scan it in at a show, so let me know what you have!

*Shaun Kotlarsky*





By the time you read this article Spring will be right around the corner. Several local shows have already been held this year with a long list of additional shows coming up in the next few months, including a show Jeanne and I are hosting in Northern Utah. I encourage every NIA member to attend one or more local shows to get the full enjoyment out of this hobby. I have made so many friends by attending shows and continue to make more friends at each additional show I attend. Also, don't forget the NIA National show coming up in Sandwich, IL in July.

As I sit here writing this article, Jeanne and I have just returned from a couple of sunny days in southern Arizona. We drove to Yuma to attend the annual swap meet there and get out of winter for a short while. We left 30° weather behind on Thursday, February 5th in exchange for 80° weather in Quartzsite, AZ on Friday and 85° weather in Yuma the next day. Better yet, the show was wonderful as always. We met up with many friends, bought and sold insulators, and had a wonderful lunch. My thanks go out to Roger Nagel and Terri Taylor for hosting this show once again. I was told it was the 16th time.

Each article in Drip Points must be written and submitted to our Drip Points Editor nearly a month in advance of when the magazine is sent out to members. This article is being written in early February. As of this writing the NIA still has not received a bid for hosting the 2016 Eastern National show. By the time you receive this edition of Drip Points it will be early March. As of March 1st any NIA member in any region is invited to submit a bid to host the 2016 National in whatever region they choose. Please give some serious thought to submitting a bid to host the 2016 National show. Darryl Wagner is our events advisor and can give you up

to the minute information on where we stand in regards to any 2016 National show bids. He and his committee are also there to help you put together a show.

I have taken on the task of looking into alternative ways of hosting our National and Regional shows to relieve some of the burden and risk on show hosts in doing so. Your input is very welcome as I prepare a list of changes to be discussed at our next Board meeting. All constructive ideas are welcome. Please send me an email, a letter, or call me on the telephone with your ideas.

Please join me in congratulating Mike Green from Lakewood, Colorado on accepting the NIA position of Development Advisor. Mike has graciously accepted the position and I'm sure we will see much coming from him in furthering the goals of the NIA.

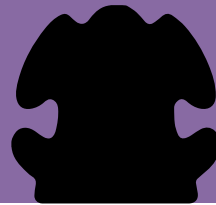
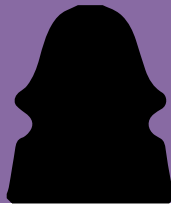
Now if I put on my another hat as author of the North American Glass Insulator Price Guide, the 2015 edition is well under way. It has been four years in the making and there are many improvements and additions coming. Watch for announcements in Drip Points, Crown Jewels of the Wire, and on ICON. The goal is to have it out prior to this year's National if not earlier. I deeply appreciate and thank everyone that has provided input for the past few years and more recently taken time to review the listings. You are the ones that make the Price Guide as good as it can be.

I wish each of you has a wonderful time immersing yourself in this great hobby!

*Don Briel*







Hello to all collectors,

I hope that the collectors in the areas hard hit this year with Winter Storms are making it thru the nasty weather ok. It has been very mild in Montana starting in January and gives you the itch to get out to walk lines and find old collections early this year. Hope it stays that way! (Knocks on wooden head!).

I just returned from my first show of the season at Yuma, AZ. Justin Martin from Butte, MT and I have been traveling to that show for a number of years to escape the cold country for a bit. What a great event Roger Nagel and friends put together for collectors. It was again well attended and a great variety of glass was available for collectors. It should probably be called "The 6:10 At Yuma" since collectors are gathering for a 9:00 AM show in the early dusk at that time. A number of dealers commented to me that recent sales had been very good and they were actively trying to locate more quality stock for their tables. Weather was again super as the show host promised as afternoon temperatures reached into the low 90's. It actually thawed out some of the ice in the veins of this frozen land collector. A big thank you goes out to Roger and the crew for putting on this event.

Speaking of shows...there are some great Western Region ones coming up soon that are always a blast so check out your local listings! I plan to go to the Seattle, WA show on April 4th and the Spokane, WA (Spokanistan Event) by the Burger Bros. if possible. It is a ton of fun to go to a show if possible and even if you are a new collector I think you will find people friendly and helpful.

Another possibility for adding to your collection are the late Winter/early Spring auctions that are loaded with quality items. I just saw how successful the Crown Jewels benefit auction was and a big congratulations goes out to Howard and Linda Banks. This is also the time to get plans in order for the Sandwich, IL National Show if not already done. It promises to be a great time.

I have talked to a number of you about your concerns about how some things have been done in the past and will pass those along to the board. My cell phone is open to hear from you if you have ideas or problems you would like to discuss.

Thanks and good collecting,

*Ron Yuhas*



Photos from the Yuma, AZ Show. Compliments of **Don Briel**





Here we are fellow Central Region members going on the tail end of winter and looking forward to spring time when we can stretch our legs and possibly get out for one of those long awaited in the wild hunts. My self this winter have been doing some researching to some places when the weather breaks that may be promising areas to scope out.

In the past last few months throughout the country there have been some great finds that were out there yet undiscovered until recently. But yet you have to be careful and smart on these types of adventures. Hunts can still happen when you take the initiative to do it legally by going through proper channels. Those channels are out there publicly and you have to take the first step in contacting them.

You might fail on your objective, but until you try you will not know. I have been quite surprised myself by results that I have gotten through communication through proper channels. Keep in mind that what we are all interested is disappearing in the air, but just under the top surface of the ground is where discoveries are yet to be found.

Reaction of some channels that I have reached out to have given me a reaction like. "What? Are you serious! " Kinda gives you a glimpse what the first gold diggers went through. Best thing about it in most

eyes the "utilitarian piece of glass" that we collect is the farthest thing from gold and why in the world would you go to such extremes and work to retrieve it. Then go and start explaining about the "bug" that got under your skin to start collecting them and you will get that "deer in headlights look" .

Anyway, going to local shows are easier and a lot less work, and as members of this great hobby we all need to go and support them.

Speaking of shows, the 13th Annual NW Missouri Insulator & Bottle Show will be held at the Platte County Fairgrounds in Tracy, Missouri on Saturday, March 21st. Contact MVIC President Darryl Wagner at (816) 719-0801 or email [nwmoshow@dwagnerkc.com](mailto:nwmoshow@dwagnerkc.com) for more details.

Get out and support the hobby that you love and find out when and where local shows will be in your area of the Central Region or get serous and get "dirty".

You still today have that "Right to Choice" which we all need not take for granted.

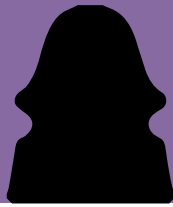
"Happy Collecting to All"

*Bear Spittler*



Ad from 1915 Electric World. Complements of Elton Gish





Is it possible? Might spring really be almost here. It seems hard to imagine that the Sandwich National is just about four months away. Usually at about this time, rumors begin as to where the next National will be. The 2016 show belongs to the Eastern Region, where roughly a third of our membership resides.

This year is the exception. To date, there have been no proposals for an Eastern National. As Eastern VP, this is very disappointing. There were a number of efforts made by clubs to develop a proposal, but none of these came to a successful conclusion.

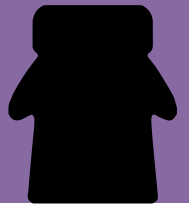
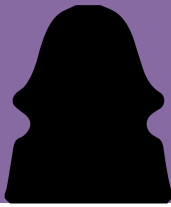
Still there is time, though not much. If you have any interest at all in hosting a show, please contact Darryl Wagner, our show committee chair. Be assured that you will be supported by the entire organization and membership. We certainly would hate to see the show held out of the region, but this is a very real possibility. All of us are here to help, pitch in and support the effort to have another successful National in the East.

*Matt Grayson*



## The CD 303/310 Hemingray Muncie “The Gerry Insulator”

See full story on page 20



Greetings to Everyone,

I hope all of you had a Joyous Holiday Season. It looks like spring is just around the corner, so hopefully many of you will be able to get out soon and look for your next insulator treasure.

In this issue of Drip Points I want to thank a few folks for their work in promoting our hobby.

First, I would like to thank Bill and Jill Meier for their daily support concerning ICON. While I am typically one of the people who simply reads the content each day, I must admit that ICON is one of the first emails I read each morning. On a daily basis ICON keeps me in touch with the hobby.

Next, I want to thank Howard and Linda Banks for their monthly publication, Crown Jewels of the Wire. Each month I look forward to receiving my copy. The layout, articles, pictures and overall presentation of the magazine is superb. When I receive my copy I read it from cover to cover before putting it down. I don't know about you, but as long as they continue to produce this great magazine, I will be a subscriber.

Finally, I want to thank Shaun Kotlarsky for his fine work concerning our NIA quarterly magazine, Drip Points. Each time I receive a copy I marvel at what he has created. I look at a copy of Drip Points and try to imagine the work that went into putting a copy together. Simply put, can you imagine anyone doing a better job?

So in closing let me say a sincere Thank You to Bill, Jill, Howard, Linda and Shaun. Please know that your hard work does not go unnoticed and you are very much appreciated.

Best Regards to All,

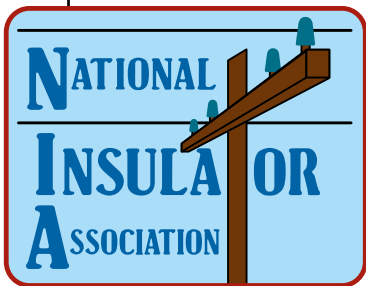
*Steve Roberts*

### NIA NOMINATIONS CHAIR REPORT

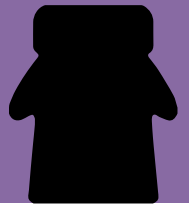
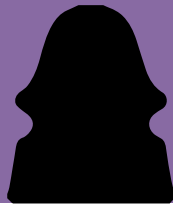
As per the organization's bylaws, the following persons have been nominated to fill positions that will be vacated this year:

**Kim Borgman** has been nominated to replace Barry (Bear) Spittler as Central Regional Vice President.

**Bill Rohde**, our incumbent Treasurer, has been nominated to continue in the same position for the next term.







Greetings to all,

I hope the holidays were a joyous and blessed time for everyone. I had the opportunity of being a part of the season for some of you who paid for memberships this year either for family, friends or newbies. It is great being a part of the giving and the pay forward scene.

Arthur and I have been very busy with genealogy for both sides of our families, including the relatively new field of genetic genealogy. This is actually another obsession along with insulators and antique glass. Arthur makes a statement about collections, "We are just the guardians of the collection for the next owner." I hope the next owners of our labors are as enthralled as we are about, not just the glass, but the history as well.

I would like to thank all of the members who pay their dues and round up on their payment and add it as a donation. This is appreciated. And it helps. Generosity is a sweet attribute.

Now for some stats: We are about average on the current dues: we are at 1397 members. This is a little under from past years, but not by much. Dues are coming in like a good ship. "Steady as she goes." New members are up slightly. I'm getting ready to send out five new member packets as I write this report.

Tis the season to start planning for the 2015 shows and focus on the 2015 46th Annual National Insulator Association Convention and Show on July 3rd through the 5th! Woo-hoo!

The web page for the NIA 2015 National on the <http://nia.org> website is awesome. Please check it out if you haven't and come back periodically for updates and changes.

*Vickie McConnell*

### CONTRIBUTE ARTICLES TO DRIP POINTS!



I always welcome interesting insulator related articles. It can be anything from a general research paper or to something very specific (Like a CD, M, U or ST Number study). I also want stories about hunts and finds!

If you want to submit an article or have questions about doing an article contact me.

**Shaun Kotlarsky** | Drip Points Editor [publications@nia.org](mailto:publications@nia.org)



### National Insulator Association

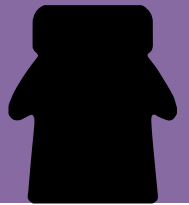
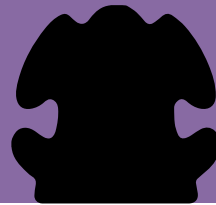
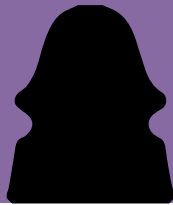
2014 - 2015 financial statement

6 months ending Dec. 31, 2014

	<b>Beginning Balance</b>	\$	<u>53,030</u>
<b><u>Revenues</u></b>		\$	28,014
<b><u>Expenses</u></b>		\$	<u>(18,364)</u>
	<i>Increase/Decrease</i>	\$	<u>9,650</u>
	<b>Ending Balance</b>	\$	<u>62,681</u>

Hello everyone,  
 2015 is here and speeding by !!! It's already February as I write this.  
 Lets hope 2015 is a fun and safe year for all.  
 There are **MANY** great shows and get togethers scheduled for the year.  
 If you can, make it to one extra insulator event this year,  
 Hopefully, gas prices stay down for a while longer and  
 it will help **ALL** of us with our travels.  
 This last quarter was our membership period and it reflects  
 in our current account balance. We just have to be careful through  
 the year to keep our expenses within budget.  
 We have the means to actively promote the NIA and the **GREAT**  
 hobby of insulator collecting **FAR** and **WIDE** this year !!!!  
 Thanks to **ALL** the membership for their help and support,  
 Things are looking **VERY** good for the NIA !!!!





Fellow collectors,

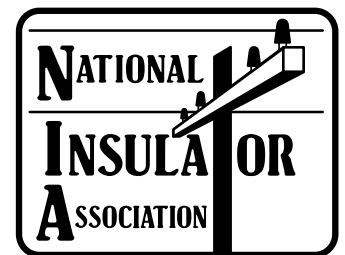
My focus this year is on raising awareness for the National Insulator Association by advertising in other hobby magazines, periodicals, and web sites. As part of that process, I'm working to create advertisements in various formats to accommodate the different publication requirements. Up until now, I don't believe we've had a standard ad format.

As I mostly collect insulators, this is also a big process of discovery for me – learning about the different publications and sites out there that might be compatible with our hobby. All of the following specialties seem to be good fits: bottle diggers and collectors, railroad and train enthusiasts, linemen and power, telephone and telegraph collectors, glassware collectors, relevant historical societies, and of course general antiques. That's a pretty wide swath! My thought is to focus on one or two major publications or sites out there from each category, and expand from there.

***“I know a lot of our members are active in these other hobbies as well, so if you can personally recommend a publication or web site to me, I would greatly appreciate it!”***

I also intend to include in the advertisement a way for the reader to receive more information about the NIA and insulators in general, either via email or postal mail. For those requesting postal mail, a cover letter could be included, as well as the NIA pamphlet and the “What Are Insulators?” booklet.

Lastly, I'd like to share a bit about our beloved NIA logo. In a joint effort between Drip Points Editor Shaun Kotlarsky and myself, we have converted the NIA logo into vector artwork. What does this mean? Basically, it's now preserved in a digitized format that can be scaled to literally any size without ever losing quality. I took great care to exactly reproduce the artwork from the best quality image we had, zoomed in to 6,400% and traced using Adobe Illustrator. Moving forward, we will be using this image to ensure consistency across our branding and merchandise. Please contact Shaun or myself for access to these files.



*Christian Willis*

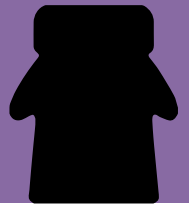
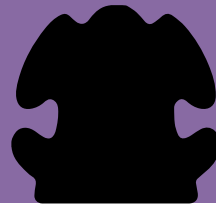
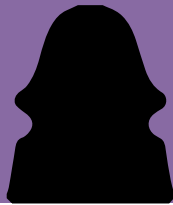
### WANT TO GET DRIP POINTS ELECTRONICALLY?



**Get Drip Points electronically to enjoy these extra benefits**

- Interactive table of contents. Just click or touch on the article you want to go to.
- Active URL and email Links.
- Readable on any device that can read PDFs, including Mac, PC, iPad, iPhone & iPod touch.
- Go green, save a tree.

To switch, email: **Vickie McConnachie** [membership@nia.org](mailto:membership@nia.org)



## The Psychology of Collecting

I recently read an article written by Mark B. McKinley, Ed. D. – January 1, 2007 from the National Psychologist.

I thought you might have interest in this perspective and so I am sharing portions of the article.

“Everyone collects something”. Personally my experiences have been with postcards from my hometown, insulators, coins, stamps, fishing tackle, bottles, magazines my articles and photos have been featured in, railroad models, daylilies, hand tools, books dealing with finding a career and focused on sales and marketing.

Think of the variety of collections: photos of family and vacations, ticket stubs, sports cards, bricks, athletic trophies, reports cards, to those who are simply pack-rats, accumulators, etc. And the reason we started collecting can be almost endless. “On the more formal side of collecting, it does seem that growing up we all collected something we made into a hobby.

“During the 1700’s and 1800’s there were aristocratic collectors who roamed the world in search of fossils, shells, zoological specimens, works of art and books. These were housed in special rooms (“cabinets of curiosities” for safekeeping and private viewing. These cabinets were a symbol of the owner’s power and wealth. These were the people who established the first museums in Europe.”

### The motivation to Collect

“Why do we collect things like Cracker Jack toys to manhole covers? Some collect for investment, yet one must wonder how a penny can become worth thousands of dollars. Some collect for pure enjoyment. Some collect to expand their social lives, attending swap meets and exchanging information with like-minded souls.”

“Still others collect to preserve the past. But there can be risk here. Medical scientists and anthropologists collect human remains for purpose of study. Yet courts have been called into the fray as to who is the proper “owner of the past”. Archaeologists legally fight to study bones, whereas, native Americans legally fight to bury them.”

“For some people collecting is simply a quest, in some cases a life-long pursuit that is never complete. Additional collector motivations include psychological security, filling a void in sense of self. Or it could be to claim a means to distinction.” How many times have you heard a fellow collector state this is the only one I have ever seen. I own a one-of-a-kind.

My personal experience with the latter during my college years studying earth sciences, natural resources and geology, I had the good fortune of studying under some professors well-established and renowned in their field. One in particular had devoted many years of his life in the field in Kentucky collecting data on fluvial outwash. I was always impressed with his pursuit. Many years later when speaking with other students, it was revealed that his collection of data was driven by a disdain for another professor who had developed a theory about how far the ice field outwash (fluvial plain) had extended south into Kentucky.

For some, collecting is a means to immortality or fame, like Dr. Louis Leakey who collected and studied the development of early man in Africa.

“For some, the satisfaction comes from experimenting with arranging, reclassifying and reorganizing parts of the larger world.”



## Collecting versus Hoarding

“Freud postulated that “collecting” back to toilet training, He suggested that the loss of control and what went down the toilet was a traumatic occurrence and that the collector is trying to gain back not only control but possession that was lost so many years ago.”

I personally heard many arguments about collecting as a means to control a small part of your world.

If you have ever watched the TV show Hoarders, you have seen the abnormal side of collecting that interferes with a “reasonable life”. It can be the gross interference with lives of others, even leading to enforcement issues. Some theorists suggest that the behavior can be an extreme variation on a compulsive disorder called “compulsive buying” which is related to compulsive hoarding. Some refer to this as “Repetitive Acquisition Syndrome”.

I have never known someone who was an accumulator or hoarder. Fortunately, all my collector friends have kept their activity under control. I do have to

admit that in my early years of insulator collecting I would not sleep for 2-3 days before a show from excitement of the possibilities of adding some new pieces to the collection. My excitement matured over the years to “you cannot own them all”; cannot wait to see old friends’ attitude. I also started to create traditions that added to the enjoyment, like meeting a fellow collector at a certain McDonalds on route to the show. Then we would hit certain antiques shops prior to the show and at the end of the first day of the show we would meet friends at another restaurant and dine together and catch up on news and collecting.

If you do not currently have some traditions related to the shows you attend, consider creating some. You’ll be surprised at how it will enhance your experience. Oh, make sure to take your camera to save and share your experiences

*Jim White*



**HEMINGRAY GLASS CO.,**  
ESTABLISHED 1848,  
**COVINGTON, KY.,**  
Sole Licensees of the Oakman Patents for the West.

MANUFACTURERS OF  
**CABLE, COLUMBIA AND JUMBO**  
**INSULATORS.**

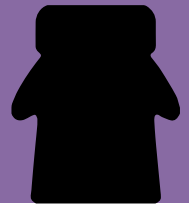
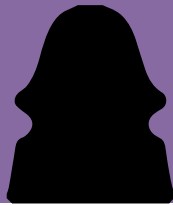
ALSO PONY, DEEP GROOVE AND DOUBLE PETTICOAT  
INSULATORS FOR ALL PURPOSES, GLASS BREAK KNOBS,  
BATTERY JARS, ARC LIGHT GLOBES, ETC.

All Insulators made by us have our  
patent drip arrangement on  
the petticoats.

CABLE INSULATOR. FULL SIZE.

This ad is from July 6, 1895 Western Electrician vol 17 Page 25. What is interesting is it states “Sole Licensees of the Oakman Patents for the West” equally as interesting is the “Manufacture of” Lists “JUMBO”. To date none of the Jumbo style insulators are attributed Hemingray. All the ones I have looked at look Brookfield to me. I definitely will be checking out Jumbos at the National ;) Ad was found by my mother, Michele Kotlarsky. Thanks mom! - Shaun Kotlarsky





From sunny Florida where the weather is a little cool today.....

After interviewing twenty-eight NIA members/collectors at the Farmington National last July, I was ready to take a break. But since then I have been getting the interviews together, and with the expertise of my grandson, Clay Bledsoe, NIA# 5581, the Vol. II DVD of the NIA ORAL HISTORY PRESERVATION will be available at the National in Sandwich, IL.

And speaking of the National Show (Sandwich, IL July 3-5, 2015), I hope you have made the decision to attend and participate!! Have you reserved your Sales Table, made your Hotel Reservations, Banquet Reservations and taken an ad in the Show Directory? The show hosts really do appreciate your early decisions. This makes planning so much easier for them.

In Sandwich, IL my goal is to interview as many National Show Hosts as I can. Of course, I may have already interviewed some of you but not on the subject of the WHATs, HOWs, WHYs, WHEREs, and WHENs of hosting a National. So be prepared past show hosts to hear from me in reference to these questions. Having hosted three Nationals and knowing the amount of time, dollars and work that are put into an endeavor like this, it will be interesting to hear from other show hosts. Just maybe I can interview some of the local show hosts also.

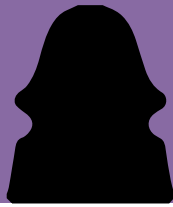
As a final note, please stay warm and travel safely.

*Jacque Linscott-Barnes*

## Spring is in the air...







The deadline is fast approaching for the applications for the NIA scholarship. If you know any young person that may be eligible remind them they have until APRIL 1ST. Remind all young collectors you know...we have an academic scholarship and a vocation scholarship. Isn't there someone in your club or church that has a child or grandchild that could use some money for college? NIA members need to support our NIA programs.

All information can be found at <http://nia.org>. Now that we are in a new tax year please remind folks that all donations to the scholarship fund are tax deductible. This is a great way to create a tribute to an outstanding member of your club or to remember a fellow collector who has passed away.

Scholarship brochures are available by request. Please contact me and I will send you as many as you need. Take them to shows, civic meetings, etc. anywhere to spread the word that the NIA has scholarships. We would like to increase the number of applicants each year.

Your committee would like to hear from you with any suggestions or comments on the scholarship program.

*Kay Bryant*



Muncies "In the wild"



The topic of Hemingray and carnival glass is one that keeps coming up. I did a quick overview on it in the Summer 2014 Drip Points Magazine, but thought it would be good to revisit the topic with a bit more detail. This article was inspired by a discussion on Facebook about "Is this a real carnival"

### Carnival glass (general history)

Carnival glass is made by spraying metallic oxide on warm glass after being removed from the molds and is still warm.

Carnival glass originated as a glass called iridill, produced beginning in 1908 by the Fenton Art Glass Company.

The name Carnival glass comes from the fact that it was actually given out at carnivals.

Most U.S. carnival glass was made before 1925, with production in clear decline after 1931. Some significant production continued outside the US through the depression years of the early 1930s, tapering off to very little by the 1940s.

### Hemingray carnival glass.

Hemingray made both insulators and bottles in carnival glass. Hemingray produced all their carnival between 1932 and 1936. For their insulator production they made insulators in carnival glass because it is slightly conductive; this would reduce radio interference created from AC power lines. Carnival was also used because of its low leakage by making the insulator slightly resistant.

Hemingray applied their carnival coating from bottom up on smaller insulators; this is why the tops are lighter and bottoms darker (Examples of this can be seen on CD 162s CD 154, etc). They did however also apply using other methods that create a darker carnival.

Hemingray bottles in carnival are done for decorative purposes. They did water bottles, utility bottles and beverage bottles. The bottles are either ice blue or 7-up green before the coating is applied.



### A word on fake Carnival Hemingray Insulators

Over the years there have been several fake carnival Hemingray insulators made. The glass is real but the coating was applied after the fact by a third party. Some are easy to spot as they are styles Hemingray did not produce or outside the above mentioned 1932-1936 range. Two examples of all known units are fake are, CD 257 and CD 1049.

Since we know they did their carnivals from 1932-1936 (based on date codes on known real Hemingray specimens) there are only a couple configurations of mold markings that Hemingray carnivals can come in. No mold and date code (1932), just a "O" (1933), O-4 (1934), O-4.

(one dot, 1935) and O-4: (two dots, 1936). Any other configuration would be outside of this range. One general note about the 1933-1934 produced Hemingray insulators, they may or may not have a mold number on the back. Anything 1935 and on will consistently have mold number.



Being in this date code range dose NOT automatically mean the insulator is real. It's just a good diagnostic tool to eliminate some.

If your insulator is with in the correct date range for Hemingray carnival, the next thing to look at is the consistency of the application. If it is on smaller lower voltage insulators such as a CD 162, 154 etc. then these would of been most likely been sprayed from the bottom up, giving the top a lighter coating and bottom a darker coating. Some insulators such as power insulators like the CD 252 and CD 281 have a thicker (darker) coating and may not have been sprayed in the above mentioned manner.

### Non Hemingray Specific ID Techniques

Check for chips on the insulator. If there is carnival coating in the chip it is most likely applied after leaving the factory.

A spotty or blotchy pooling of color is also a sign of post factory application.

Check for cracks, sometimes when the insulator is reheated to apply the coating they will crack.

For more info. on fake carnival glass be sure to see <http://www.insulators.info/books/fake/section2.htm>





**17 Known Insulator styles in Carnival**

CD 118 - CD 122.4 - CD 137 - CD 142 - CD 142.4 - CD 154 - CD 162 - CD 164 - CD 168 - CD 214 - CD 230 - CD 230.1 - CD 232 - CD 252 - CD 281 - CD 295 - CD 1052

**6 Hemingray made bottles in Carnival**

**Water Bottles:** 1Pt and 1Qt wishing well design.

**Utility Bottle:** Universal home bottle  
**Beverage bottles:** No embossing with just a dot bottom, Sun Punch, Hammers (7-Up color glass), Wolverine Bottling Works.



CD 230



CD 230.1



CD 118



CD 137



CD 142



CD 142.4



CD 154



CD 162



CD 164



CD 168



CD 232



CD 252



CD 281



CD 1052



Nine CD 230s Carnival Hemingray D-512 in use

**Photo Credit:**

**Shaun Kotlarsky:** Sun Punch Bottle (Center Bottle), Universal Home Bottle (Bottom Bottle), CD 154, CD 168, CD 230, CD 230.1, CD 232, CD 254, CD281, CD 1052

**Christian Willis:** CD 118, CD 142, 142.4

**Bill Meier:** CD 137, CD 164

**Matthew Willett:** CD 162

**Rodger Lucas:** Pint Water bottle

**Bob Stahr:** Wolverine Bottling Works bottle (Top bottle)

**Kevin Jacobson:** CD 230s in use

**Sources:**

Wikipedia > Carnival Glass > [http://en.wikipedia.org/wiki/Carnival\\_glass](http://en.wikipedia.org/wiki/Carnival_glass)

Bob Stahr > Bottle Info. (Crown Jewels of the Wire, September 2001, page 11) > <http://goo.gl/ApYKcL>

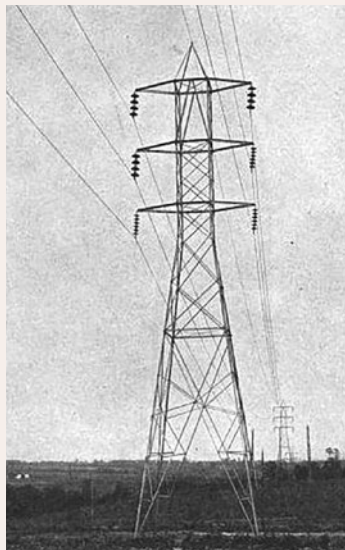
Christian Willis > Hemingray Mold Date Codes > <http://www.hemingray.info/database/mold-datecodes.html>





**Towers above Tallulah Gorge**

In November 2014 Mike Spadafora and I searched the Southern Power Company's Tallulah Falls-Easley 100kV transmission line. The line was built in 1913 for the purpose of buying electricity from the Georgia Railway & Power Company's Tallulah Falls power plant to be sold by Southern Power who serviced the Carolina region. The insulators chosen were Thomas two-part suspensions hung in chains of four. These "Southern Bells" were a whopping 14 1/2 inches wide! A few other collectors have hunted down the suspensions on the line totaling around 12 Thomas make and 1 Victor make in the hobby until Mike and I did our part. We believe Thomas may have been short on manufacturing enough suspensions in time to complete the large order. There were two, three-phase circuits making the total insulator count at 24 per standard tower (6 strings of four each) and 50 per strain tower (10 strings of five each). The Thomas insulators were successful until cement expansion caused cracks in the outer skirt. This led to problems mostly with strain tower insulators failing, causing shut downs. By the late 1910s all of the insulators were replaced by standard 10in. OB disks.



**Tracy Schaff found the only whole Victor two-part suspension but with a broken inner skirt. He plans to use a mint Victor inner skirt to replace the broken one**

Michael and I set out early one morning to hike to the most inaccessible tower along the line. Our planned hike would take us a mile-and-a-half to the tower site. We were motivated to check out this tower even though there was a good chance the insulators were missing or broken beyond all repair. Luckily the forest was recently logged and logging roads were plowed leading us closer to the tower site. The

**Southern Power Company's Great Falls-Greenville transmission line built in 1908-1910 showing Southern Bells in use**



drivable roads took a lot of the hike off our backs! Starting as close to the tower as possible, Mike and I hiked down into an old growth valley and then up toward the ridge where a bulldozer cleared an old line service road to the tower. We walked another hundred feet on the old service road to the base of the tower. Underneath the tower 20 metal caps stuck out of the leaves! Were they whole? One by one each was lifted up, all but one coming up whole!

Discovering where the old service road was another plus as we drove the truck as close to the tower as possible. Each hike began at the tower and ended at the truck uphill hundreds of feet. Seven hikes were made in the next few days, each a difficult job but well worth the effort. After cleaning the insulators we could see what we got. Some had cracks in the outer skirt from cement expansion while a others were dead mint. The most common color of our suspensions was dark brown with a few insulators having a red or caramel glaze. It is also interesting to note that none of the insulators from the cache were marked Thomas although many on the line are marked THOMAS with an additional script letter such as X. We are proud to have found one of the best suspensions find in the hobby! Good luck and happy hunting!



All 20 Thomas suspensions cleaned up and in the sun!



ST-2270 - Photos from : <http://allinsulators.com>



Cache of twenty Southern Bells ST-2270



One of the suspensions before digging!





## Insulator Hunting in Mexico

Our Mexico Trip January 2015

The odd porcelain insulators I spotted in April 1992 were within reach. We finally got permission to get on the roof of the building. I was hoping to get a close-up picture so I could finally figure out what these neat old porcelains were. I got on the roof and walked out to the pole. As I got close, I realized I could lean out and touch two of them. It was a good lean, from a long way up, and I had to push back on the pole a little to get back upright. Now I didn't want a picture, I wanted them!

This Mexico trip starts in 1992, when I went to Mexico with Jim Sanders. He had been down in the 1970's and found some early California glass like green CD 130's on poles in downtown Guadalajara. We thought there might be some interesting stuff along the railroad; so we took different trains out of Guadalajara to see what was still up on the poles. We saw some interesting country and rode on a second class train, what an experience. As far as insulators, we picked up some CD 162.7 un-embossed Mexican ones in purple.

Waiting for the train one day, we spotted these old looking porcelain ones on a pole in downtown Guadalajara, between the old town and the railroad station. I showed the pictures to Bill Rohde, but from the bad camera angle, he couldn't tell what they were. Then nearly 23 years later I was once again staring up at these insulators trying to figure out what they were.

Prior to this trip most of our hunting was along the railroad tracks, but I always wondered what we could find if we searched a big city like Guadalajara. Think of all the good stuff found in large cities in the US. Wood insulators in



By Dale and Art Huber

SF, California helmets and transpositions. Old power stuff. The more I thought about it the more I wanted to look. There was just one piece of the puzzle missing. Not knowing Spanish, I wouldn't be able to get anything I found.

My brother Art and I have been going to Mexico since the early 1990's. After my Dad died I went down there a couple of times by myself. I think Art was talked into going by my family to keep me company and hopefully a little safer. Our trips consisted of walking the old railroad tracks and climbing for anything we liked. By then the lines were no longer in use so it didn't seem too risky. Most of the poles along the tracks were old railroad rail so it was possible to climb them by hand. We grew up in Northern California and climbed trees when we were kids. So

we had experience climbing things. On the steel poles the trick was to keep your hands and feet near each other, then you can sort of walk up the steel rail. This worked well in our thirties but as we got older we needed help. We built this steel ladder that we carried around on one trip. Then we bought some "magic" shoes that would use your body weight and clamp onto the bottom flange of the rail. With the shoes we could walk up the poles. Much easier than trying to climb them. This extended our hunting years until my brother was a little over 50. (Add about six years for this last trip) The trouble with steel poles is they were valuable to the locals. They are handy in brick home construction and as the cost of steel went up they were worth some money. The last couple of trips we found fewer and fewer poles still standing. It seemed like our hunting in Mexico was drawing to a close.

Now I had a Spanish speaker in the family. My son-in-law's first language is Spanish, and his brother agreed to go



**View of the M-2250s and CD 245s**





with us. Now was my chance to hunt in a large city. We picked Guadalajara because family was close by and I always wondered what else was there besides those old porcelain ones.

As I was planning the trip, Paul Greaves heard where I was going and emailed me some info on a 1893 line going to Guadalajara. It talks of a power plant built 17 miles away from Guadalajara in 1893. The electric machinery was supplied by Thomas-Huston. The part Paul was excited about was the following: The pressure utilized being rather above the safe limit, the insulation of the circuit is augmented by fastening the wires upon oil insulators. Paul figured the insulators would be the CD 245 TH but with the oil cup they were designed to use. The agreement was I could keep any TH insulators found, Paul just wanted an oil cup or two.

The power plant was still standing, anything of value long gone. The nearby town had the old steel poles but with much more modern insulators.

### **M-2250 from street level**

We took a tour of one of the nearby buildings and I spotted what looked like a CD 245 TH insulator. It was a long ways away so I couldn't tell if there was an oil cup or not. We pointed to it and our tour guide informed us a drug lord just purchased that building and it might not be a good idea to knock on the door. We agreed.

On our first day in Guadalajara we spotted some neat old porcelain insulators up on a pole, actually two poles. The pole on the corner had 4 of them on a cross arm. Above them were two CD 245 TH glass insulators. I looked but saw no oil cups. With the two TH insulators this must have been part on the line from Paul Greaves article. I was also pretty sure it was the same insulators I saw in 1992. We found all this within two hours of hunting. Just think we have a few more days, we are going to find all kinds of cool

stuff. That dream slowly shattered as we walked and drove all around and found nothing else of interest.

We came back to town the day before we were to fly home. We walked and stared at the insulators. I could think of no simple way to get them. They were way up in the air probably 30 feet or more. They were cemented to the pegs, in the middle of town and we still didn't know what they were. We got permission from a store owner to get on his roof to get a better look. From this vantage point they were only about 20 feet away. They looked even better. Then we got permission to get on the roof of the building only 5 feet from the pole. What I didn't realize was the cross arm put the insulators real close to the roof, so close I could touch them. We travel prepared with a tool bag including a pipe wrench, crescent wrench, hacksaw, wood saw, screw drivers and more, we have used all of these things in the past. My brother got out our duffel bag with all our tools and was thoughtful enough to bring some water. It took forever to cut through the  $\frac{3}{4}$ " steel pegs. Finally we had two of the insulators. They are early 1900 vintage Locke Victor porcelain, M-2250 with the 7-1 Locke embossing (according to Elton Gish)

I could talk forever about our many trips to Mexico. But that was the highlight of this trip.



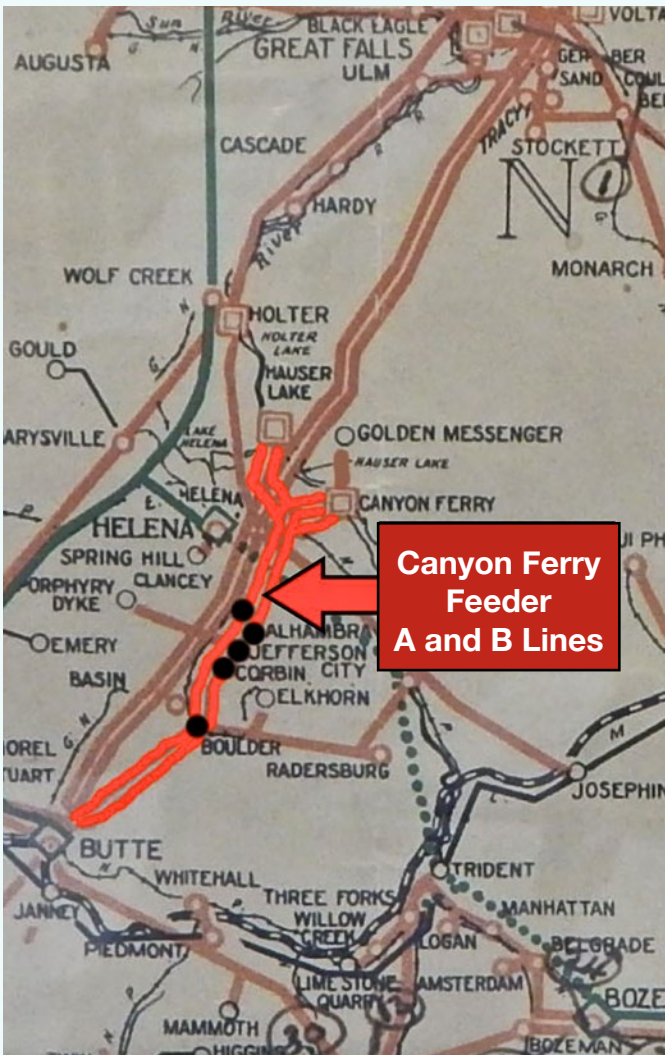
**M-2250 in the motel**



**The magic climbing shoes**

One of my favorite insulators, living here in Montana I have always had a special place in my heart for the Big 2 piece power insulators that ran by my home for years delivering power to the Berkley copper mine in Butte. This line started at Canyon Ferry Dam and ran South to Butte, there were two lines that ran side by side called the Canyon Ferry feeder A and Canyon Ferry B Lines, and there were many lines tapped off of these which fed many Mines and small Mining towns along the way, like the Porphyry dyke Cochrane Line, the town of Elkhorn where Hemingray #2 provo's were used, as well as power to Boulder and Basin Mt just to name a few:

The Design and Development of the line started in 1900, where a special glass insulator was designed by H.M Gerry Jr, chief engineer and manager of the Missouri River Power Co. and designs were sent to and made by the Hemingray Glass Co, Covington Ky. The insulator proper is a three petticoated glass 5 1/8" high and 9" in diameter, the special pin extending as near as possible to the wire groove below the insulator, extending up inside the inner petticoat is a tapered glass sleeve 5 1/2" in diameter at its lower end, clearing the cross-arm by 1 1/4", and supported on a 1 1/4" shoulder on the pin. The pin are all seasoned oak. Still further dried and impregnated by boiling in hot paraffin, so that pins themselves stand 100,000 Volts on test. The pins are 12" long above the butts. 1 1/2" at the top of thread, which is of standard pitch, the maximum diameter is 2 1/2" tapered on a 60-degree angle at the top of this butt, whose diameter is 2" for the pin which fits the cross-arm. The distance between the line cables is 18 inches. The pole lines are 40 Feet apart, and the right of way is entirely cleared of trees, etc. The poles are of Idaho Cedar, 8 inch tops, and in length from 35 to 90 feet, all poles above 75 feet being spliced.



Canyon Ferry Feeder A and B Lines



No. 76 (9-INCH) MUNCIE TYPE					
83918	95000	80000	22000	16	11250 375.00
Dimensions, inches: Height, 5 7/8; diameter, 9; groove, 3/8.					
No. 77 (9-INCH) MUNCIE SLEEVE					
83919	.....	.....	.....	32	5400 262.50
Dimensions, inches: Height, 8; diameter, 5 1/2.					
No. 78 (9-INCH) MUNCIE TYPE ASSEMBLED					
83920	110000	95000	33000	8	18125 637.50
Dimensions, inches: Height, 13 7/8; diameter, 9; groove, 3/8.					

Muncie ad from "ST. Paul & Duluth, Minn." Exact year unknown. Scan compliments of <http://hemingray.net>

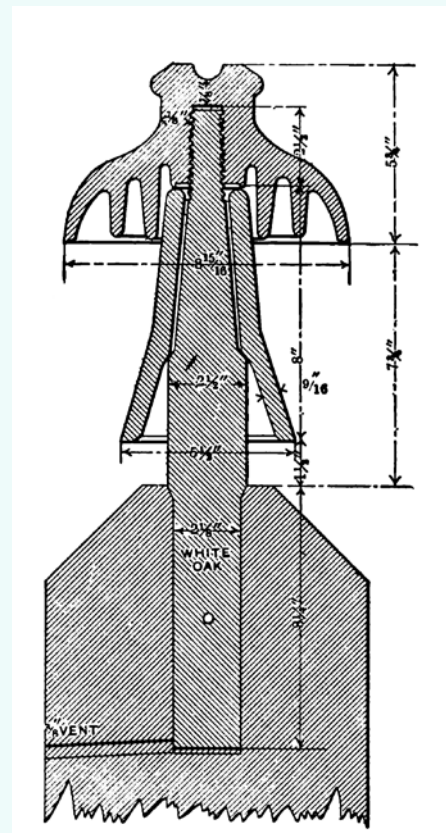




### The Gerry 50,000-Volt Insulator.

In view of the completeness of the drawing and the appearance thereon of all dimensional data, a detailed description of this remarkable insulator is unnecessary, beyond stating that it, together with its tapered glass sleeve, is all glass, non-cemented. It is stated that these insulators have proven to be absolutely reliable when in operation under 50,000 volts, and that the only defect which has occurred in their design rested in the belief that it would have been better to have given more body to the walls supporting the cap of the insulator at the section of the horizontal plane of the top of the pin, where a thickness of seven-eighths of an inch is shown. This belief is held for the reason that several—probably half a dozen—caps have broken off at the point stated, which would indicate slight structural weakness at that point. Were a new lot of insulators to be ordered the only change which would be made in the specification for them would be in the direction of increased strength in the body of the insulator supporting the cap

One further notation: The ratio in which the transformers are wound is 552 ½ to 50,000. The generator voltage was stated to be 630 volts, which would give a line potential of approximately 57,000 volts. The weather was clear, cold, dry and crisp.



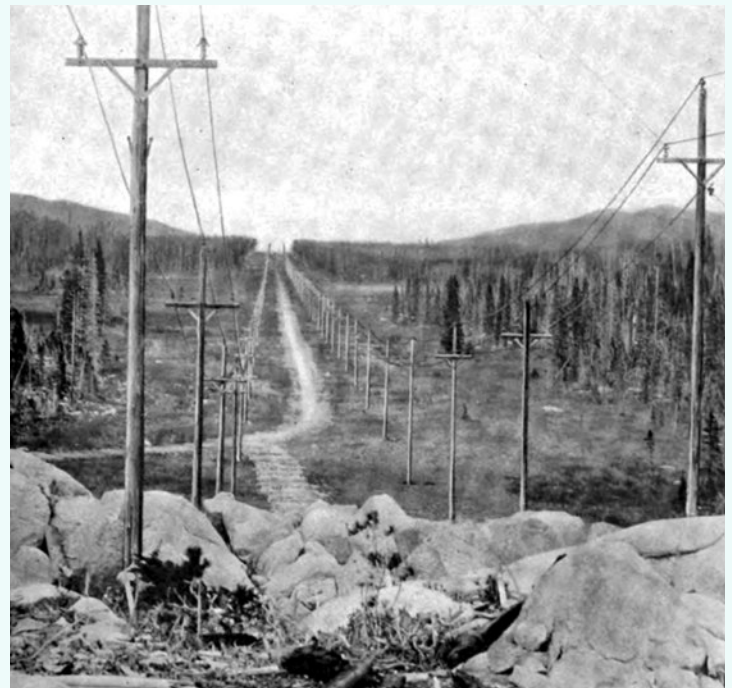
From The Journal of Electricity, Power and Gas  
February 1903

Yes now you know where the Coolie Hat came from. The CD 304/310 had some other design changes as the body was more straight and no Neck per say, so that's how it got its Nick Name "Coolie Hat" Notice the neck area in the following Picture.



As a further illustration of current practice, the high tension lines of the Missouri River Power Company, built under the direction of the writer, are here briefly described.

This transmission has been in service for over three years, operating at 57,000 volts, delivering power at a distance of over sixty-five miles in a satisfactory manner. The country through which it passes is very rough as shown in Fig. 27.

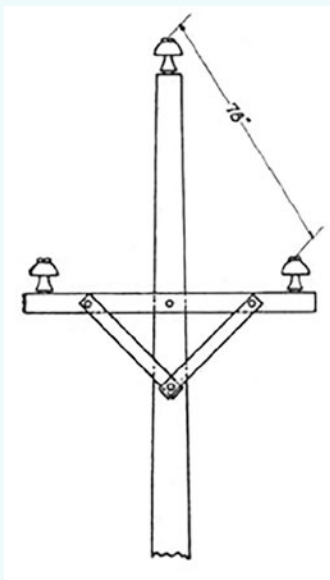


**Fig. 27. and Fig. 28.- Missouri River Power Company's Transmission Lines.**

The lines leave the generating station at an elevation of about 3,700 feet, pass over three distinct summits, including the Continental Divide, at which point they reach an elevation of 7,300 feet above sea level. There are two parallel lines extending from the generating station on the Missouri River to the Butte substation. They are located in the main on a private right of way 200 feet in width, from which all timber

was removed. Each of the lines carries three copper cables arranged in a triangular position, seventy-eight inches apart. The cables are composed of seven strands and have an area of 106,000 circular mils. Fig. 7 illustrates the upper part of a standard pole.

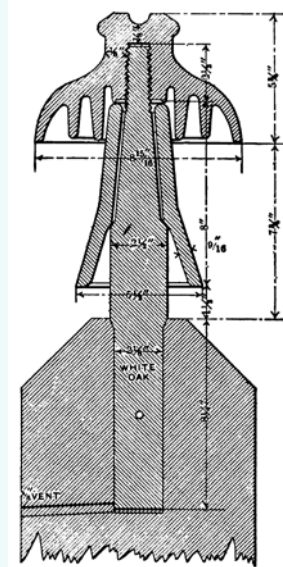




**Fig. 7.- Pole Top, High-Tension Transmission Line, Missouri River Power Company.**

The poles are of Idaho cedar, the cross-arms of Oregon fir, the braces and pins of white oak, and the insulators and sleeves of glass. The cross-arms, braces and pins are held in place by means of through bolts. The pins in the top of the poles are of larger size and of greater length than those in the cross-arms, to provide for the greater strains there present. The pins were prepared by being first dried and then treated in paraffine, until all moisture was removed, and were then tested to 60,000 volts.

The circuits are transposed five times, making two complete turns between the generating station and the substation. The switching arrangements are such that the circuits may be operated either singly or in multiple. A telephone circuit is located on one of the lines and gives good results in service. The poles are from thirty-five to seventy-five feet in length, and the pole-tops are from nine to twelve inches in diameter. The poles are set from six to eight feet in the ground, according to height, and the standard spacing is one hundred and ten feet, with a maximum spacing of one hundred and fifty feet, when required by the nature of the ground. Fig. 28 shows the lines through timbered country.



**Fig. 8.- High-Tension Insulator, Sleeve, Pin and Pole Top, Missouri River Power Company.**

The constructions just described were selected as typical examples of what has been accomplished in the building of high tension transmissions. Several of the lines mentioned have been in regular operation for periods varying from one to three years, and are in no sense experiments, but rather represent successful commercial undertakings. Other interesting and well-known systems might have been described had the limits of this paper permitted a further expansion of the subject.

We are now to the point of considering the very highest-voltage insulators—those which are in use for voltages from 50,000 to 60,000. Fig. 8 shows a glass insulator used by the Missouri River Power Company in Montana, for 55,000 volts. This insulator has been in service since 1901. The insulator is in two parts, one a hood 9 in. in diameter, and the other a sleeve set over the pin. The sleeve, which is open at the top, adds nothing to the dielectric strength of the insulator, its purpose being to protect the wooden pin. Obviously the sleeve would be of little value if a metal pin were used. This type of insulator possesses the advantage of being in two parts which are separable, either of which can be replaced if broken.

**JOURNAL OF ELECTRICITY**  
POWER AND GAS  
Devoted to the Conversion, Transmission and Distribution of Energy

Established as second-class matter May 7, 1906, at the Post Office at San Francisco, Cal., under the act of Congress March 3, 1879.

VOL. XXVIII No. 4      SAN FRANCISCO, JULY 27, 1912      PER COPY, 25 CENTS

**HEMINGRAY GLASS CO.**  
(INCORPORATED 1910)  
COVINGTON, KENTUCKY

BERTRAM M. DOWNS, GENERAL SALES MANAGER

REPRESENTED ON THE PACIFIC COAST BY

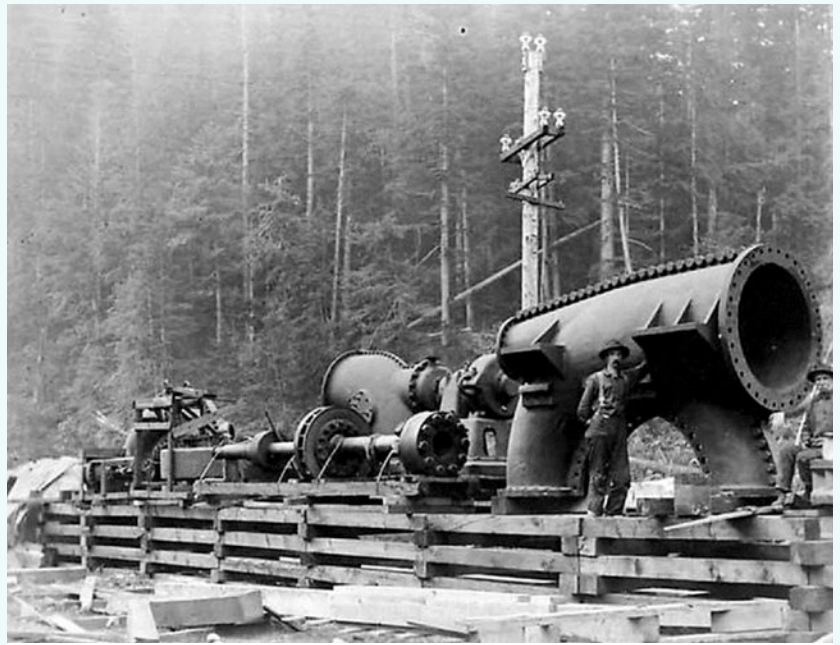
<small>Electric Appliance Company, San Francisco, Cal.</small>	<small>Falson Supply Co., Portland, Oregon</small>
<small>Pacific States Electric Co., Los Angeles, Cal.</small>	<small>Frank Darling &amp; Co., Vancouver, B. C., Canada</small>

Where to Buy It in the West, Page 9, 10, 11.      Alphabetical Index to Advertisers, Page 6.

**Here is a Great Ad Thanks to Elton Gish  
from Hemingray on the Muncie**

The Hemingray Muncie, Hemingray No76 or Gerry Insulator was primarily used in Montana but a very few found their way to different states. Recently, Shaun Kotlarsky and Mike Spadafora found a line in Michigan that supplied power to a Trolley line that used Hemingray Muncies.

A few found their way out to Washington State and were used to supply power into Seattle, Thanks to Mike Spadafora for his digging into the WA state archives and finding this information.



Property of Special Collections, University of Washington Libraries.

This picture was taken around 1904 when the City of Seattle was building the Ceder River powerhouse. The 44 kV pole line in the background was the main line to Seattle that ran along the aqueduct water line from the power plant to Seattle . This line was the first Seattle City Light transmission line. Robin Harison mentioned to me once that early collectors as well as lineman remember seeing large Muncies without

bases in service in Seattle in the 1950's and 1960's. These were likely the original Ceder River insulators that were removed in 1907 and later reused in distribution service in Seattle. Sadly no pretty aqua-blue glass Muncies have survived to adorn the poles of Seattle today. Ed Sewell found a whole Muncie top and several more broken ones on a hill above the powerhouse in 1999.



Here is a photograph dated 1987 of Bill Burger digging an outhouse pit that was temporarily not under water due to a drought that year. Rattle Snake Lake is a man made lake in Western Washington in the Cascade Mountains just south of North Bend. This pit and many others at the bottom of this lake were loaded with mostly broken Hemingray Muncies. Note the Muncie top directly below Bill in the mud pile.

### Electrical Review April 11, 1903

THE HEMINGRAY GLASS COMPANY, Covington, Ky., with factories at Muncie, Ind., recently received the following letter from the Missouri River Power Company at Helena, Mont., Written by M. H. Gerry, Jr., general manager, which is a remarkable tribute to the excellence of the company's type of insulator: "We are at present running the highest voltage in commercial circles, and are carrying a very large and important load, at a distance of sixty five miles from our power-house, with practically no line trouble whatsoever. These high-voltage transmission lines are equipped entirely with your insulators, and are giving excellent satisfaction, and are demonstrating daily the practicability of transmitting power at voltages of 55,000 and over."



## Michigan Muncies

Shaun Kotlarsky and Mike Spadafora did some major hunting in Michigan and made a Great Discovery, they found a Old trolley line that used Muncies with the CD310 Base and Special Oak Pin, here's a little info on it, the electric power for the road came from the Kalamazoo valley electric company who built tree dams on the Kalamazoo river. The first was Towbridge, completed in the 1899, the second was Plainwell in 1902, and the third pine creek (Otsego) in 1903.

The 1899 Trowbridge-Battle Creek via Kalamazoo transmission line used Hemingray Provo insulators

and it is likely upgrades and new lines to incorporate Plainwell (1902) and Pine Creek (1903) also used Hemingray provo types.

The traction line between Battle Creek and Jackson was completed in 1903. Several specimens of insulators have been found on the ROW. Both Hemingray Muncie and Provo have been found along with various porcelain insulators.

The line was discontinued in 1928 with track and cars sold for scrap shortly after closing.





## Muncie Colors and Markings

CD 303 and CD 310 do come in a variety of colors and shades ranging from aqua to Hemingray blue to green and shades of a aqua teal blue. As far as markings, the most common is the good old Muncie Type, to the less Common No 76 to the very rare no name.



Here is a Hemingray Blue on the left a Green with amber swirls on the right



The Very Rare No Name Muncie



No 76 Marking





## About the Cover Photo

From the July 4th 1954 Helena Independent Record News Paper.

Depicting Installation of First High Voltage Power Line. Visitors to the Veterans' and Pioneers' Memorial building may now view the latest diorama, which depicts the coming of electrical power to Montana.

K. Ross Toole, director of the Historical Society of Montana, said. ***"The attractive diorama has been constructed during the past two months by Irvin S. (Shorty) Shope, Helena artist, with funds provided by Montana Power Company. It is located at the far end of the museum in the corner at the right of the planned Lewis and Clark diorama. Shope, assisted by H. K. Dickinson of Montana Power. and C. A. Bernier, one of the company's old time employees, did considerable research into the early methods of stringing electrical wires before he started the work.***

***The scene is south of Helena, where the first power lines in Montana were strung with horse and wagon about 1902. The lines carried power from the old Hauser lake and Canyon Ferry dams to the Elkhorn and Butte mining centers.***



***The establishment of electrical power in Montana through those dams was one of the most important steps in forwarding Montana industry and economy," Shope said.***

***"It's a romantic story in its rancher-cowboy type, wears fanner work clothes and a big hat. The man up the pole dropping the round line wears a wool cap, and the third man, kneeling beside the wagon, wears a hat with four dents and work clothes. The team of horses, first to be modeled by Shope, who specializes in oil paintings of horses, are perfect in every detail; including the miniature blinders on the bridles. They were modeled of tythetic wax and painted. A Irvin Hayes of Helena, office manager of the bridge department of the highway department, made the harness, insulators and some parts of the wagon bed. The wagon obtains spools of copper wire mounted on a crow bar, which rests on miniature sawhorses. There are wood planks on the ground near the interpretation. One was used to brake the spools when the wire ran too freely and the other was used as an extra seat for the third passenger. "***



The line was part of one of the first high voltage transmission lines in the United States, Dickinson said Saturday. Shope's spectacular diorama depicts three men, a team of horses and wagon stringing the copper wires on cedar poles along the Jefferson river valley with the Spanish peaks in the background. The route taken by these men installing the line almost follows the present road to Butte, the artist said.

The Painting-Diorama now resides in the Broadwater Historical Museum in Townsend MT, which has some really great displays so if you come to Montana on Vacation, I recommend that you check it out.

Thanks - Doug Rusher



## The Most Important Porcelain Insulator You've Never Heard Of

By Steve Coffman

Outside of a few historians of electrical transmission and industrialization, the Great Barrington, Massachusetts line is little known. It required no great feat of engineering to construct, it was fairly short (a little over five miles) and it served a sleepy little town with a small population of no great note. In other words, it was just like hundreds of small transmission lines built in the late 19th century. Except for one little thing. It was the first time AC power was transmitted commercially in the United States with a modern transformer.<sup>1</sup>

The line built in 1888 was a hodgepodge of some of the worst line construction possible. The famous engineer Franklin Pope had this to say about the 1888 line in 1895. "The street lines, according to the usual practice, were of No. 6 B. & S. weather-proof wire; the poles were of cedar, of good size and fitted with pine or spruce cross-arms, with common green glass insulators set upon wooden pins. In consequence of a silly prejudice, which had been fomented amongst the citizens by interested parties against permitting poles to be set in the streets, the wires, in a very great number of instances, had been attached, by cross-arms or brackets, to the trunks of the immense elm trees with which the streets of the town were shaded; a practice which occasioned an enormous loss of current every wet night as well as much irregularity in the performance of the lights. The effect on the trees was by no means salutary, while the appearance was as much worse than that of poles in the streets as could possibly be imagined."<sup>2</sup>

So here we have a rather hideous transmission line built in a rather hideous fashion. Enter Franklin Pope and his propensity for European style construction. As early as 1887, Pope was advocating for the use of German or British style insulators in electrical work in

the US.<sup>3</sup> When he was contracted to build the 1894 Great Barrington line, "The insulators used were of the large double-bell white porcelain type (German government standard)"<sup>4</sup> This brings us to the Great Barrington Insulator.

Collectors should need no introduction to the top groove, double petticoat style insulator common in Germany for telegraph work. U-1743 and similar represent just this style, and are in fact what Franklin used to build the Great Barrington Line. In the 1960's, Philip Mayhew recalls "There were actually two of them at the same shop in Great Barrington, Mass about 47-48 years ago. I don't remember the exact price, but my dad got it for me, and of course, I had to have the mint one as I had never seen anything like it. The other one had one or two substantial chips on it. This was a huge antique shop with big white columns out front across from a horse track, as I recall. At the time this was a pricey piece cause I really had to convince my dad to lay out the cash & had to work a lot around the house. It cost more than my first threadless or Boston Bottle Works pieces!"

In this case "Them" is a U-1743 porcelain insulator far, far from home. The chipped specimen has been lost to time, and it is reported a local historian in Great Barrington has a U-1743 that can be attributed to the 1894 line. The Mayhew insulator currently resides in my collection, making me the third owner of this piece. Communication with collectors in Germany confirm the marking on the Mayhew U-1743 is from the late 1880's to early 1890's, which neatly coincides with the 1894 construction of the Great Barrington line. This particular specimen is marked "SGHOMBERG BERLIN". The big question had always been how a German telegraph insulator wound up in a quiet corner of Massachusetts. Some have held that it was a war trophy brought back from one of the World Wars, but this theory soon vanished when confronted with the simple facts of the Great

1 Edisontechcenter.org <http://www.edisontechcenter.org/GreatBarrington.html> retrieved February 8, 2015

2 Franklin L. Pope, "Notes on the Reconstruction of a Small Central Station Plant", *Electrical Engineer* 16, (1895): 102

3 Franklin L. Pope, no title, *The Electrician and Electrical Engineer* 6, (1887) 331

4 Pope, 1895, 103



Barrington line. It is nearly inconceivable to consider that when faced with a early 1890's German telegraph insulator, in the very town, where the only installation of such insulators in the US happened, would not be in fact from that line.

The Great Barrington insulator is fairly boring as far as insulators go, which is probably one reason it's not received much attention. It's a plain white porcelain, of common style, with nothing to really set it apart from the many others much like it running about. However, aside from being used in a very early US power transmission line, this particular insulator is worthy of several important historical claims.

Most notably, it is without a doubt, the first use of wet process porcelain used in electrical transmission in the US. Imperial started advertising insulators in 1893, but no reports of lines built with Imperial insulators exist from that era. While it is impossible to claim it is also the first case of porcelain ever being used in electrical transmission in the US, it is possible to claim it is among the very first cases of porcelain insulators being used on a US transmission line. 1894 was a busy year for porcelain, with General Electric building at least two lines with the domestically produced dry process U-701 insulator. More than likely, the GE Lines and Great Barrington all went up within months of each other, making 1894 the year porcelain started coming into its own.<sup>5</sup> Please note Ed Sewall's article states in error that Great Barrington was rebuilt in 1893, when by Franklin Pope's account in 1895 it was built in 1894.

What then is the importance of this humble German telegraph piece? It is a long forgotten chapter of history, one writ large with names like Fred M. Locke,

<sup>5</sup> Ed Sewall "The General Electric Porcelain Factory and U-701", *Crown Jewels of the Wire*, January 1998, 5.

Thomas, Boch, Imperial, and others. Within a few short years of the installation of this insulator, domestically produced porcelain insulators would be made by several different companies, and the construction of the Niagara Falls to Buffalo line established the supremacy of wet process porcelain once and for all for transmission work. By this time, Fred Locke and Imperial were loudly trumpeting this fact, and their wares, while the use of German telegraph pieces made of wet process porcelain were forgotten.

At best, only two insulators are known to survive from Great Barrington, and only one is within the hobby. It is the first wet process porcelain insulator used in power transmission in the US, and one of the very first uses of porcelain for transmission in the US. Nearly fifty years ago, Phillip Mayhew recognized something very odd in that long gone antique store, and we should all be glad that he did, because this unit may have never entered the hobby otherwise.





There's nothing like the thrill of the hunt. Whether you hunt at auctions, antique stores or in the wild, it's still just as thrilling, or disappointing. Unfortunately, in south central Kansas there isn't a lot of good hunting in the wild. So Samantha and I mostly frequent stores and auctions. That's why we rely heavily on making friends within the auction community. A newer dealer friend of mine, Dale, who we met through such networking, informed me of a shop with something I might find interesting. He told me there were several colors including some purples. I assumed he meant Whitall Tatums. Still, I followed his lead to the store. To my surprise I encountered a group like I had never seen outside of a show!

Setting on a little table in this boutique surrounded by mostly re purposed and barely vintage items were some beautiful pieces of glass looking quite out of place. I spotted several signals some were common, but there were six CD162s and they were HEMINGRAY! I gathered up six of the pieces: a green, two ambers, an electric blue, and two ROYAL PURPLES and sauntered to the counter. I happily paid her for the pieces. As I waited for her to wrap them, I asked her if she knew where they came from, but she didn't know. So I counted my blessings and headed home with a mile wide smile..

Fast forward two days later. I drive to the monthly regional flea market and see my friend Dale in his usual spot with three insulators that immediately caught my eye. We were both smiling as I walked up. "I never said that I didn't buy any first!" was the first thing he said! Unfortunately, I only had enough to buy one more ROYAL PURPLE! I called Samantha and asked

here to bring some cash and come buy these pieces. I headed back to work. She called me and reluctantly told me that the others had sold. My heart sank, but the glowing purple in my passenger seat consoled me. I arrived home that evening to find that Sam had duped me. To my surprise there set yet another royal purple and another amber!

I guess the moral of the story is always keep looking, be nice to people, and never underestimate your significant other! Oh, and if you are wondering what we paid for this group. All I can say is, a gentleman never asks and a lady never tells. As always GOOD COLLECTING!





# SPRING 2015 NIA Products

## GOLF / POLO SHIRTS

**Colors:** Call or email for colors

**Info:** All with embroidered logo some with pockets, pockets, 2X **\$3.00** extra

**Price:** **\$38** or **\$41**

**Size:** S \_\_\_ M \_\_\_ L \_\_\_ XL \_\_\_

2XL \_\_\_ 3XL \_\_\_

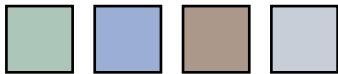
**Color:** \_\_\_\_\_

**Total Quantity:** \_\_\_\_\_

**Total Price:** \_\_\_\_\_

## T-SHIRT

**Colors:** Stonewash Green, Stonewash Med. Blue, Pebble (Sand), Lt. Steel Gray



**Info:** Hanes Heavyweight, 6.1 oz. cotton pre-shrunk. Screen-printed logo (front & back)

**Price:** **\$20** or **\$23**

**Size:** S \_\_\_ M \_\_\_ L \_\_\_ XL \_\_\_

2XL \_\_\_ 3X \_\_\_

**Color:** \_\_\_\_\_

**Total Quantity:** \_\_\_\_\_

**Total Price:** \_\_\_\_\_

## CREW NECK SWEATSHIRTS

**Colors:** Hunter Green, Cardinal Red, Lt. Steel Gray



**Info:** Heavy weight 100 % cotton/polyester blend, pre-shrunk, embroidered logo

**Price:** **\$25** or **\$30**

**Size:** S \_\_\_ M \_\_\_ L \_\_\_ XL

2XL \_\_\_ 3X \_\_\_

**Color:** \_\_\_\_\_

**Total Quantity:** \_\_\_\_\_

**Total Price:** \_\_\_\_\_

## BUTTON FRONT SPORT SHIRT

**Colors:** White, Red, Blue, Brown, Tan



**Info:** All with embroidered logo (no pockets)

**Price:** **\$32** or **\$35**

**Size:** S \_\_\_ M \_\_\_ L \_\_\_ XL

2XL \_\_\_ 3XL \_\_\_

**Color:** \_\_\_\_\_

**Total Quantity:** \_\_\_\_\_

**Total Price:** \_\_\_\_\_

## HENLEY T-SHIRT

**Colors:** Black and Lt. Steel Gray



**Info:** Only come with embroidered logo. three button placket

**Price:** **\$25** or **\$28**

**Size:** S \_\_\_ M \_\_\_ L \_\_\_ XL

2XL \_\_\_ 3X \_\_\_

**Color:** \_\_\_\_\_

**Total Quantity:** \_\_\_\_\_

**Total Price:** \_\_\_\_\_

## HOODED SWEATSHIRT

**Colors:** Lt. Steel Gray



**Info:** With full front zipper/muff pocket & drawstring hood, embroidered logo

**Price:** **\$35** or **\$40**

**Size:** S \_\_\_ M \_\_\_ L \_\_\_ XL

2XL \_\_\_ 3X \_\_\_

**Color:** \_\_\_\_\_

**Total Quantity:** \_\_\_\_\_

**Total Price:** \_\_\_\_\_

## DENIM SHIRTS

**Colors:** Stonewash Blue or Natural



**Info:** Nicely weighted denim, pre-shrunk cotton, left-side pocket

\*ladies order comparable men's size, see chart

**Price:** **\$35** or **\$38**

**Embroidered logo**

**Size:** S \_\_\_ M \_\_\_ L \_\_\_ XL \_\_\_

2XL \_\_\_ 3XL \_\_\_

\* S/Sleeve \_\_\_ \*L/Sleeve \_\_\_

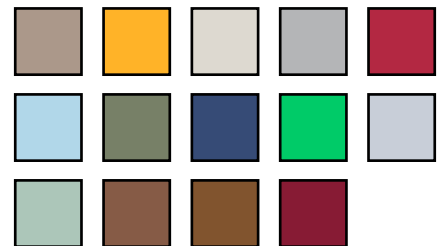
**Color:** \_\_\_\_\_

**Total Quantity:** \_\_\_\_\_

**Total Price:** \_\_\_\_\_

## EMBROIDERED LOGO T-SHIRT

**Colors:** Sand, Gold, Ecu, Ash Gray, White, Cardinal Red, Lt. Blue, Army Green, Navy, Bright Green, Lt. Steel Gray, Stonewash Green, Chestnut Brown, Maroon



**Info:** I have a limited number of t-shirts with pockets, call for details Pockets, **\$2.00** additional on all regular t-shirts

**Price:** **\$20** & **\$23**

**Size:** S \_\_\_ M \_\_\_ L \_\_\_ XL

2XL \_\_\_ 3X \_\_\_

**Color:** \_\_\_\_\_

**Total Quantity:** \_\_\_\_\_

**Total Price:** \_\_\_\_\_

### EMBROIDERED CAP

Colors: Khaki, Stone, Blue, Gray, Orange, and Pink, Red (\$2 extra)  
(Circle color choice)



Price: \$20 or \$22 (Red)

Total Quantity: \_\_\_\_\_

Total Price: \_\_\_\_\_

### NIA NAME BADGE

Info: Engraved; beveled edges | pin back (free) OR Magnetic back add \$1.00

Price: \$13 or \$14

Total Quantity: \_\_\_\_\_

Total Price: \_\_\_\_\_

### COLLECTORS PATCH

Price: \$4

Total Quantity: \_\_\_\_\_

Total Price: \_\_\_\_\_

### BADGE BAR

Info: For NIA position or local club

Price: \$4

Total Quantity: \_\_\_\_\_

Total Price: \_\_\_\_\_

### NIA WINDOW DECAL

Info: for outside car window.

White: 5 1/2 x 6 3/4 Color: 4 1/4 x 5 3/4

Price: \$10 (White) \$7 (Color)

Color: \_\_\_\_\_

Total Quantity: \_\_\_\_\_

Total Price: \_\_\_\_\_

### TOTE BAG

Info: "Big Thunder" Tote bag - sturdy with NIA logo

Price: \$15

Total Quantity: \_\_\_\_\_

Total Price: \_\_\_\_\_

### Name Badge Engraving Information:

Name _____	NIA# _____	City _____	State _____	<input type="checkbox"/> Pin	<input type="checkbox"/> Magnet
Name _____	NIA# _____	City _____	State _____	<input type="checkbox"/> Pin	<input type="checkbox"/> Magnet
Name _____	NIA# _____	City _____	State _____	<input type="checkbox"/> Pin	<input type="checkbox"/> Magnet

Club Bar _____	Quantity Needed _____
Club Bar _____	Quantity Needed _____
Club Bar _____	Quantity Needed _____



Thank you for supporting the NIA!

### U.S. Postage:

\$6.75 for the first item & \$1.50 for each additional item ordered.

Postage for Patches, Badge Bars are \$0.60 each. Decals, \$1.95

Name Badges are \$0.85 each to mail.

For Postage outside the US or AK & HI Contact me for quote

### Shirt Sizing Chart:

#### Adult/ Mens

S 32-34 | M 36-38 | L 40-42 | XL 44-46

2X 48-50 | 3X 52-54

#### Ladies

S 28-30 | M 32-34 | L 36-38 | XL 40-42

Ladies order comparable adult/men's size for most shirts, unless specifically noted as a ladies shirt

Please make check or money order in U.S. funds payable to **National Insulator Association or NIA**

Name: \_\_\_\_\_

Address: \_\_\_\_\_

City: \_\_\_\_\_ State: \_\_\_\_\_ Zip: \_\_\_\_\_

Telephone: \_\_\_\_\_

Email Address: \_\_\_\_\_

Subtotal: \_\_\_\_\_

US Postage: \_\_\_\_\_

Total Enclosed: \_\_\_\_\_

### Send completed form to:

Tina Rienstra | 6527 W. 93rd Avenue | Crown Point | IN 46307 | 219-365-7913 | [tlriens@att.net](mailto:tlriens@att.net)





# Membership Application & Renewal Form



Prospective members may join the NIA at any time; however, the "membership year" begins on January 1st and ends on December 31st. New memberships issued within three months of the beginning of the new membership year (October – December) will be good for the following calendar year. New members are entitled to all membership privileges immediately upon acceptance by the NIA.

**If you are joining the NIA during the months of January through September your membership will expire on December 31st of this calendar year.**

Submit (Payable to the NIA in U.S. funds) To: **Vickie McConnachie**

P.O. Box 1466  
Corrales, NM 87048

**Dues Schedule:**

Regular Membership ..... **\$22.00**  
 Junior Membership (under 18) **\$5.00**  
 Club or Organization ..... **\$50.00**

[membership@nia.org](mailto:membership@nia.org)  
 Or renew online at:  
<http://nia.org/membership/>

**Check appropriate class:** Regular  Family  Junior  Club/Org.

**Check years of Payment:** Single year  Multi-year

**Please Print Legibly**

Name \_\_\_\_\_

NIA # (If renewal) \_\_\_\_\_

Address \_\_\_\_\_

City \_\_\_\_\_

State/Province \_\_\_\_\_

Zip/Postal Code \_\_\_\_\_ (+4) \_\_\_\_\_

Country (if not U.S.) \_\_\_\_\_

Telephone Number \_\_\_\_\_

E-Mail Address \_\_\_\_\_

Include me in the Annual NIA/Crown Jewels Directory..... Yes  No

Include my Telephone Number..... Yes  No

Include my E-Mail Address ..... Yes  No

I would like to receive Drip Points in the following format ..... Paper  Electronic

(Check only one, an e-mail address is required for electronic)

Referred by: \_\_\_\_\_ NIA # \_\_\_\_\_

**Additional Family Members residing in the same household at no additional cost.**

Name	NIA # (If renewal)
1 _____	_____
2 _____	_____
3 _____	_____
4 _____	_____

Signed \_\_\_\_\_

Date \_\_\_\_\_ Amount Enclosed \$ \_\_\_\_\_

# Advertising Information

## Drip Points Magazine Advertising Information

- Display Ads will be sold by fractions of a page.
- Camera-ready copy is preferred but not required.
- An additional fee may be charged for color and set-up based on size and complexity for ads.
- All advertising will be kept confidential until it is published.
- Multiple ads must run in consecutive issues with no changes.
- All ads must be paid for in advance.
- Advertisements must meet all postal regulations that govern publications mailed at Non-Profit Standard Mail prices of postage.

### Full Page

1x.....	<b>\$100.00</b>
2x.....	<b>\$189.00</b>
3x.....	<b>\$278.00</b>
4x (Full Year) ..	<b>\$362.00</b>

(Multi run discount **\$11.00/x**)

### One-Half Page

1x.....	<b>55.00</b>
2x.....	<b>101.00</b>
3x.....	<b>147.00</b>
4x (Full Year) ..	<b>193.00</b>

(Multi run discount **\$9.00/x**)

### One-Quarter Page

1x.....	<b>\$30.00</b>
2x.....	<b>\$53.00</b>
3x.....	<b>\$76.00</b>
4x (Full Year) ..	<b>\$99.00</b>

(Multi run discount **\$7.00/x**)

### One-Eighth Page

1x.....	<b>\$20.00</b>
2x.....	<b>\$35.00</b>
3x.....	<b>\$50.00</b>
4x (Full Year) ..	<b>\$65.00</b>

(Multi run discount **\$5.00/x**)

### One-Sixteenth Page

1x.....	<b>\$15.00</b>
2x.....	<b>\$27.00</b>
3x.....	<b>\$39.00</b>
4x (Full Year) ..	<b>\$51.00</b>

(Multi run discount **\$3.00/x**)

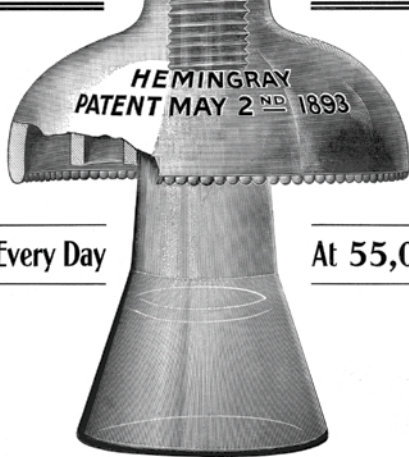
For more Info. on advertising or to buy an ad contact:

**Christian Willis**, NIA #5185  
P.O. Box 2797  
Parker, CO 80134

Phone: (949) 338-1404

Email: [admanager@nia.org](mailto:admanager@nia.org)





**Working Every Day** **At 55,000 Volts**


**HEMINGRAY GLASS CO.**  
(INCORPORATED 1870)  
COVINGTON, KENTUCKY

BERTRAM M. DOWNS, GENERAL SALES MANAGER

REPRESENTED ON THE PACIFIC COAST BY  
Electric Appliance Company, San Francisco, Cal. Fobes Supply Co., Portland, Oregon  
Pacific States Electric Co., Los Angeles, Cal. Frank Darling & Co., Vancouver, B. C., Canada

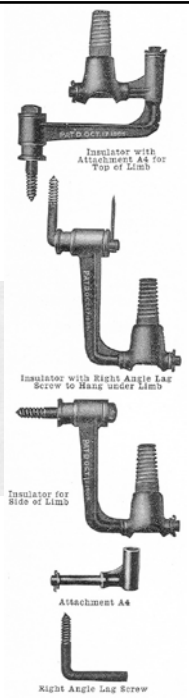
## WANTED

### Unique & Unusual Insulator Mounting Pins & Brackets



**Eucalyptus Insulator Pins**  
**Brackets**  
**Pole Steps**

- All types of cast iron, multiple pin brackets
- Home-made pins and mounts
- Manufacturer, wholesaler and distributor catalogs



**LOU HALL**  
**THE "PIN MAN"**  
NIA # 7185  
363 W. Stuart Ave., Fresno, CA 93704  
(559) 435-1740 e-mail: louhall@pacbell.net

**DUNTON TREE INSULATOR**



## National Insulator Association Scholarship Fund

**Money for college!**  
**\$1000/\$500 up to \$2000!**

NIA Scholarships are available for a \$1000 academic scholarship and a \$500 vocational scholarship.

Write a 300 word essay. It's that easy!  
Tell us how to spread the word about the hobby.

These scholarships are to encourage the growth and public awareness of the hobby.





Submission deadline is April 1

The Scholarship Application and Application Guide is available at:  
<http://www.nia.org/scholarship/>

## COMING SOON

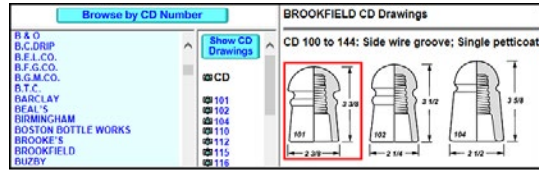
### 2015 North American Glass Insulator Price Guide



- Updated prices
- New CDs
- Added Index Listings
- Added Color Listings
- New Appendix to aid Identification
- Expanded Appendices
- Insulator Drawings with Listings
- Scale Drawings in Appendix
- Spiral Bound

**Updated Price Guide Browser by Bill Meier**

Access Price Guide information on your computer where you can look up prices and see the drawings with a few simple mouse clicks.



**Donald R. Briel**  
P. O. Box 188  
Providence, Utah 84332  
[DonBriel@comcast.net](mailto:DonBriel@comcast.net)  
(435) 753-5786

# Upcoming Shows

**MARCH 7, 2015 (Saturday)**

## **SHREWSBURY, PENNSYLVANIA**

The Chesapeake Bay Insulator Club hosts the 27th Annual Shrewsbury Insulator Show and Sale, Saturday March 7, 2015 (the day before the Baltimore Bottle Show) at the Shrewsbury Fire Hall, 21 W. Forrest Ave, Shrewsbury, PA 17361. Show runs from 9:00 am to 2:00 pm. For more information contact: GUS STAFFORD at 914-382-0843 or e-mail: [gus.stafford@gmail.com](mailto:gus.stafford@gmail.com).

**MARCH 13 – 14, 2015 (Friday-Saturday)**

## **CHICO, CALIFORNIA**

The 49th Annual Antique Bottle, Jar, Insulator & Collectable Show and Sale will be held at the Silver Dollar Fairgrounds, located at 2357 Fair Street, off Highway 99 in Chico, California. Show times are Friday, 10:00 a.m. - 7:00 p.m. (\$5 early bird admission, dealer setup) and Saturday, 9:00 a.m. - 4:00 p.m. (free admission). Info: RANDY TAYLOR 530-518-7369. Email: [rtjarguy@aol.com](mailto:rtjarguy@aol.com)

**MARCH 20 – 21, 2015 (Friday-Saturday)**

## **DELAND, FLORIDA**

The Deland M-T Bottle Collector's Club presents their 45th Antique Bottle & Insulator Show March 20 – 21 just off SR 44 & I-4 at the Volusia County Fairgrounds (Exit 118) Deland, Florida, March 20 & 21, 2015. Dealer set up 1- 6 PM Friday. Fee for early buyers Friday 3-7 PM and before 8 AM Saturday is \$20. Regular show Admission and parking for all buyers on Saturday 8 AM – 3 PM is FREE. (160 Sales Tables will be available for this show) For Information Please Contact our Asst. Bottle Show Chairman: BRIAN HOBLICK, 11721 NW County Rd 236, Alachua, Florida 32615. Email: [hoblick@aol.com](mailto:hoblick@aol.com) or phone: 386-804-9635. Or, Bottle Show Chairman DWIGHT A. PETTIT JR. at 386-956-8033 or email: [pettit9119@bellsouth.net](mailto:pettit9119@bellsouth.net) Show contract available at our website [www.m-tbottleclub.com](http://www.m-tbottleclub.com)

**MARCH 21, 2015 (Saturday)**

## **TRACY, MISSOURI**

The 13th Annual NW Missouri Insulator & Bottle Show will be held at the Platte County Fairgrounds, 1st & Tribble St., Tracy, Missouri 64079. In between Kansas City & St. Joseph, just off of I-29, only 6 miles from the Kansas City International Airport. Set up time will be 7:00 AM to 9:00 AM, then open to the public from 9:00 AM to 3:00 PM. The facility was full and had great traffic last year and we expect more of the same. Sales tables are \$25 each and admission is FREE. Food on site. Host hotel is Quality Inn & Suites, 1201 Branch St., Platte City, MO 64079 (about a mile from the fairgrounds). Special room rate available until February 15th. Mention "Insulator & Bottle Show" for discount. After that date, ask for Divya Patel for possible discount. Contact DARRYL WAGNER at 816-719-0801 or email at [nwmoshow@dwagnerkc.com](mailto:nwmoshow@dwagnerkc.com) for information and/or show packet.

**MARCH 22, 2015 (Sunday)**

## **WILMINGTON, OHIO**

The Columbus, Ohio show has been moved to Wilmington, Ohio. The 2015 show will be held on Sunday, March 22 at the Roberts Centre, 123 Gano Road, Wilmington, OH 45177. Use Exit 50 at I-71 & Rt. 68. Hours are 9:00 to 3:00. Admission is \$4. No early buyers. For table details, contact: JOE HARDIN 937-728-9930 email: [jkcollections@gmail.com](mailto:jkcollections@gmail.com) or JAMIE HOUDSHELL 419-722-3184 email: [jhbottle@hotmail.com](mailto:jhbottle@hotmail.com)

**MARCH 29, 2015 (Sunday)**

## **ENFIELD, CONNECTICUT**

Yankee Pole Cat Insulator Club Annual Spring Insulator, Bottle, and Tabletop Collectibles Show and Sale. American Legion Hall, 566 Enfield Street (US Route 5), Enfield, Connecticut 06082. Show hall is 1 mile from Exit 49 of I-91 (20 minutes from Hartford as well as the Mass Pike). Show Hours 8AM to 2PM. Dealer Setup 6AM to 8AM. Free Admission. 30+ sales tables as well as several displays. Free display space available. For dealer contracts, display information, or any other details - please contact JOHN RAJPOLT (203) 261-1190. E-Mail: [rajpolt@earthlink.net](mailto:rajpolt@earthlink.net)

**APRIL 4, 2015 (Saturday)**

## **SEATTLE, WASHINGTON**

26th Annual Emerald City Insulator / Bottle Collectors Get-Together & Potluck Show will be held Saturday, April 4 at the Mount Zion Baptist Church, 1634 19th Ave, Seattle, WA 98122. Setup at 8:00. Show begins at 9:00. New venue & much more space with lots of parking. \$15 donation requested for a space. Admission is free. Bring insulators, electrical artifacts, signs, bottles, etc. Please bring a table if you can. Also, remember to bring something for the potluck. Info: GIL HEDGES-BLANQUEZ 206-218-7936 or ROBIN HARRISON 206-522-2135 or BONNIE & WIN TRUEBLOOD 360-491-1285.

**APRIL 10 – 11, 2015 (Friday-Saturday)**

## **YORKVILLE, ILLINOIS**

Antique Insulators, Lightning Rods, & Bottle Show. Set up and come to buy, sell or trade Friday night, Dealers set-up Friday 5pm - 9pm. Free Admission. Saturday 8am - 3pm. Contact JASON TOWNSEND 630-667-3357, [jtins76@gmail.com](mailto:jtins76@gmail.com) This is the 6th year at Yorkville., Kendall County Fairgrounds. This is a huge facility in a great location! 115 tables are available, \$30 each! No rules.



**APRIL 17-18, 2015 (Friday-Saturday)**

**SHELBY, NORTH CAROLINA**

The 2nd annual International Lineman's Museum Show will be held Fri., April 17 from 1-3 and Sat. April 18 from 9-1 in Shelby, North Carolina at the VFW Post 4066, 855 West Sumter St., Shelby, NC 28150. Set up will begin at 12 noon on Friday and 8am on Saturday. Sales table fees are \$30 for 8 foot and \$35 for 10 foot tables. Dealers must provide their own table coverings. Electricity is \$5 per table, with each dealer providing their own 10'-20' drop cord. For more information, check out [www.linemanmuseumshow.com](http://www.linemanmuseumshow.com). The museum-sponsored Bikes, Butts and BBQ motorcycle ride event will also happen that weekend, and BBQ plates for Saturday evening can be preordered for \$12. See [www.linemanmuseumride.com](http://www.linemanmuseumride.com) for more information on this event. Dixie Jewels Insulator Club is helping with registration for the show. For sales table contracts contact: BILL HALEY, [wgh@tnaqua.org](mailto:wgh@tnaqua.org), (423) 326-9248.

**APRIL 18, 2015 (Saturday)**

**NATRONA HEIGHTS, PENNSYLVANIA**

Western Reserve Insulator Club's 15th Annual Allegheny Valley Insulator Show & Sale at VFW Post #894; 894 Veterans Lane, Natrona Heights, PA 15065. Show Hours 9:00am - 3:00pm Dealer setup 7:30am. 8' table \$20. Info: RON BARTH 724-845-8439 [rktbarth@windstream.net](mailto:rktbarth@windstream.net) Directions: Route 28 Exit 16 (Freeport), follow to Natrona Hts, Right at signal (Freeport Rd), Right at signal up lane to VFW.

**APRIL 18, 2015 (Saturday)**

**CIBOLO, TEXAS**

The Lone Star Insulator Club Potluck will be held Saturday, April 18th from 9:30 AM to 4:00 PM at 212 Springtree Trail, Cibolo, Texas 78108. Bring a table and chair. Lunch will be provided. Bring a side dish. For information, contact CHRIS HERNANDEZ at 210-317-1819 or email at [chris\\_sr1872@yahoo.com](mailto:chris_sr1872@yahoo.com)

**APRIL 18, 2015 (Saturday)**

**FRESNO, CALIFORNIA**

19TH Annual Rohde Ranch Barbeque & Tailgater will be held Saturday, April 18th at the Rohde Ranch, 12441 North Friant Road, Fresno, CA from 7AM to 4 PM. You'll enjoy free of charge the famous Deep-pit BBQ feast. Numerous tables are provided, or you may bring your own, or just open your tailgate and sell & trade. Swapping stories and bringing your recent finds are strongly encouraged. Bill's extensive porcelain insulator collection will be open for public viewing. Info: BILL at 530-701-4377 Or KAT at 559-434-2162.

**APRIL 18, 2015 (Saturday)**

**AUSTIN, MINNESOTA**

The Northwestern Insulator Club will have their Spring Swap Meet at The American Legion, 809 12th St SW in Austin Minnesota on Saturday, April 18th. Host will again be Gordy Cassidy. There will be some tables available but you are welcome to bring your own. Tables will also be available outside, weather permitting. Food will be available for purchase all day so come for breakfast and stay for lunch! Hours are 9:00 to 3:00 and an auction will be held at noon so bring stock for that event.

This is a great location in southern Minnesota easily accessible by I-90 and I-35. For questions or more info, contact Gordy Cassidy at 507-433-9650 or Colin Yennie at [cryennie@hotmail.com](mailto:cryennie@hotmail.com) or 507-289-1095. Please RSVP so we have a table count. See you there

**MAY 2, 2015 (Saturday)**

**PERTH, ONTARIO, CANADA**

17th Annual Insulator Show and Sale, sponsored by the Ottawa Valley Insulator Collectors, will be held on Saturday, May 2, from 10:00 to 2:00 at the Lion's Hall on the Perth Fair Grounds in Perth, Ontario. Info: [dларaspberry@hotmail.com](mailto:dларaspberry@hotmail.com)

**MAY 15 - 16, 2015 (Friday-Saturday)**

**COLUMBIA CITY, INDIANA**

One of the bigger little shows! Columbia City Insulator & Collectibles Show, Whitley County 4H Center, 581 West Squawbuck Road, Columbia City, Indiana May 16-17th 2014. Dealer setup Friday noon - 3PM, Public 3-5 PM, Seminar@6 PM. Saturday dealer setup 6-8AM, Public 8-3PM. First 8' table \$28, 2 tables \$48, 3/\$60, 4/\$75, Contact: GENE HAWKINS [gene.hawkins@mchsi.com](mailto:gene.hawkins@mchsi.com).

**MAY 15 - 16, 2015 (Friday-Saturday)**

**CAYUCOS, CALIFORNIA**

The 23rd Annual Golden State Insulator Clubs Spring insulator and collectibles show Lions Veterans Hall, 10 Cayucos Drive (at the pier and inches from the beach). Friday 2 - 6 P.M. , Saturday 8 A.M.- 3 P.M. Free show [Admission.Free](#) appraisals and evaluations. There will be a barbecue Saturday after show. RV Park, motels and restaurants nearby. Please bring recent finds for show and tell. Info: BOB MERZOIAN, [bobmerzoian@mac.com](mailto:bobmerzoian@mac.com) or 559-781-6319 or PAULETTE KOTAN, [gypsyduo795@gmail.com](mailto:gypsyduo795@gmail.com) or 619-985-9085.

**MAY 15 - 16, 2015 (Friday-Saturday)**

**KENT, WASHINGTON**

Washington Bottle Collectors Association Annual Spring Insulator, Bottle and Collectible Show. Largest combined bottle and insulator show in Northwest Washington. Join us at the Kent Commons Event Center, 525 Fourth Ave N, Kent, WA. Dealer set up and early admission (\$5) Friday, May 15, 1-5 PM and free general admission Saturday, May 16, 9 - 3 . This location is closer to the population centers in NW Washington and we got quite a bit more walk in traffic last year. For more information and table reservations contact: NIEL SMITH (206) 783-0215 [wbcaweb@gmail.com](mailto:wbcaweb@gmail.com) or PETE HENDRICKS (253) 335-1732 or ROBIN HARRISON (206) 522-2135 [robin3250@comcast.net](mailto:robin3250@comcast.net)



**MAY 16, 2015 (Saturday)**

**TELLICO PLAINS, TENNESSEE**

The Dixie Jewels Insulator Club's spring swap meet will be held from 9:00-3:00 on May 16, 2015 at the Tellico Plains Community Center, 132 Bank Street, Tellico Plains, Tennessee. Gary and Elizabeth Tilson will be our hosts. This location is only one half mile away from the Charles Hall Museum, which features an extensive collection of early telephone equipment and insulators, as well as much, much more. This will be a great opportunity to add to your collection at the swap meet and tour the nearby museum too. There will be a noon meal provided and if you can bring a dessert it would be appreciated. Attendees are expected from 6-10 states, so come and enjoy a day with fellow collectors in Tellico Plains. Contact GARY TILSON for more information at (423) 442-3775 or [grtilson@yahoo.com](mailto:grtilson@yahoo.com).

**MAY 23, 2015 (Saturday)**

**SPOKANE, WASHINGTON**

It's the Spokanistan Insulator, Bottle Show & Swap time again. Umpteenth Annual Show. Friday night BS. Saturday show begins at 9AM. Please RSVP for lunch. The Burger Compound is at 8925 S Cheney-Spokane Rd., Spokane, WA 99224. Ask for directions or look for the buried school buses. Info: BRENT at 509-953-4150 or BILL 509-443-9037.

**MAY 30, 2015 (Saturday)**

**LOGAN, UTAH**

The first time Cache Valley Insulator Swap Meet will be held on Saturday, May 30, 2015 starting at 8:00 am. The location is indoors at the Cache County Fairgrounds Pavilion. The fairgrounds is located at 450 South 500 West, Logan, UT 84321. Lunch will be provided at noon. Admission is free. Please RSVP to reserve a table and to help us plan the food. Info: DON BRIEL (435) 753-5786 or [Don.Briel@comcast.net](mailto:Don.Briel@comcast.net) Approximately 20 tables are available and there is room for more if you want to bring your own. Camper sites are available at the fairgrounds for \$20 + tax per night. Several hotels are within 1 mile of the fairgrounds.

**MAY 30, 2015 (Saturday)**

**MOUNT BRYDGES, ONTARIO, CANADA**

12TH Annual Southwestern Ontario Insulator Meet, Saturday, May 30th, at the home of Henry & Hilary Nicpon, 21644 Adelaide Road, RR 1, Mount Brydges, Ontario, Canada N0L 1W0. Set up a table or browse the grounds to view the wide variety of insulators for sale or trade. There will be a \$10 charge to cover food & beverages. Please RSVP. Info: TOM IANNELLI 519-641-0098 or email: [tiannelli0098@rogers.com](mailto:tiannelli0098@rogers.com) or BARRETT NICPON 519-670-8796 or email: [barrett.nicpon@gmail.com](mailto:barrett.nicpon@gmail.com)

**JUNE 5 - 6, 2015 (Friday-Saturday)**

**FARMINGTON, NEW MEXICO**

8th Annual B-Square Ranch / Tommy Bolack Insulator Tailgater will be Saturday, June 6th at 3901 Bloomfield Highway in Farmington, New Mexico 87401. Tommy invites you to attend a premier event! Tours will be available on Friday, June 5th for the Bolack Electromechanical Museum and the Bolack Museum of Fish & Wildlife. The Electromechanical Museum contains Tommy's amazing 50 year collector of antique electrical artifacts that tie in well with insulator collecting, creating the largest go-with museum of its kind. The Bolack Museum of Fish and Wildlife is one of the largest private collections of its type in the world, containing over 2,500 specimens from five continents. Tours are available by appointment only. The insulator tailgater will begin at 9:00 AM on Saturday. Free admission and no fee to sell, so bring your tables or open your tailgates. (A few tables will be available as the event may be moved inside of the museum in case of inclement weather.) Lunch will be catered free of charge to all guests! Special tours of Tommy's personal world class insulator collection will also be available on Saturday. Please note that this is a RSVP event that will require advance planning, so please inform us as far in advance as possible if you plan to attend. All inquiries and RSVP replies should be directed to the event coordinator: TOMMY BOLACK 505-325-7873. Please leave a message if no answer.

**JUNE 6, 2015 (Saturday)**

**TAMA, IOWA**

The 18th Annual Hawkeye State Insulator Swap Meet will be held on June 6th from 8:00 AM - 3:00 PM at the Tama Civic Center, 305 Siegel St. in downtown Tama, IA. Dealer set up starting at 7:00 AM. There will be no cost to set up and lunch will be provided for those who attend. We again look forward to hosting many great Midwest collectors and friends that have shown up over the years to support this fun and relaxed traditional event. We encourage you to join us for what hopes to be a great time in the Hawkeye State! For additional information feel free to contact DAVE SHAW at (641) 484-5463 or e-mail at [dashaw@mchsi.com](mailto:dashaw@mchsi.com)

**JUNE 13, 2015 (Saturday)**

**COLORADO SPRINGS, COLORADO**

Springtime in the Rockies Show: The 6th annual Triple-Ridge Insulator Club Potluck & Show will be held in Colorado Springs, CO from 8am -3:00 pm on Saturday, June 13th 2015 at 2905 N. Cascade Ave. We have room for 30 or more tables, both inside and outside. There's no admission or table setup charge and most tables are but a step or two from a beautiful view of Pikes Peak and the Rocky Mountain Front Range. We are expecting to have collectors from several states attend, and a great selection of glass & porcelain insulators as well as go-withs, bottles and hobby related goodies. A delicious lunch of grilled burgers, assorted chips, dips and drinks will be provided, and folks are encouraged to bring a side dish, dessert or other munchies. Come join us for a great day of fellowship with other collectors and enjoy a little Springtime in the Rockies. Please give us a call or email so there's sure to be plenty of tables, chairs and food. DAN GAURON: 719-492-0181 or MIKE GAUDY: 970-215-0040.



**JUNE 20, 2015 (Saturday)**

**PERKIOMENVILLE, PENNSYLVANIA**

42ND ANNIVERSARY of the annual Pennsylvania Insulator Show and Sale. Come one; come all. Buy, sell & trade insulators and related items. Swap hunting stories and have a good time with collector friends. Please bring a food item for the insulator picnic. Saturday, June 20th from 9:00 AM until the last person leaves. Location: 1837 Perkiomenville Road, Perkiomenville, PA 18074. Info: STEVE BOBB 610-539-6533 or CLAUDE A. WAMBOLD 215-234-8413.

**JULY 3 – 5, 2015 (Friday-Sunday)**

**SANDWICH, ILLINOIS**

**46th Annual National Insulator Association Show and Convention.** 135+ Dealer tables, 25 Displays. This year it will be held at the Timber Creek Inn & Suites and Convention Center. 3300 Drew Ave., Sandwich, IL 60548 for hotel reservations call: 630.273.6000 and mention NIA for special rates. For more show information visit: [www.2015niashow.com](http://www.2015niashow.com) Host: JASON TOWNSEND, call: 630-667-3357 or email: [jtins76@gmail.com](mailto:jtins76@gmail.com) or BOB STAHR 630-793-5345 or email: [bob@hemingray.com](mailto:bob@hemingray.com)

**JULY 17 – 18, 2015 (Friday-Saturday)**

**BEND, OREGON**

Tres Amigos Tail Gater! Come one, come all! 2015 Show and Swap in Central Oregon at the home of Jim Sinasek and sponsored by the Jefferson State Insulator Club. This location is close to Mount Bachelor, Tumalo State Park and the Deschutes River. On site camping is available along with the nearby state park. The show will be located at 64420 Research Road, Bend, Oregon 97701. We will be serving BBQ chicken, hamburgers and hot dogs at noon on Saturday. Many hotels are located in the area and lots to see. In the south of town there are even Outlet Stores. As usual, story time around a big bonfire will be in store Friday evening. For lodging and info contact: JIM SINASEK at 541-383-8067, MID NORRIS at 541-281-2715 or ERNIE CARLSON at 503-622-3573. As always, side dishes are welcome and be sure to bring your own tables and chairs. A few tables will be available. Your RSVP would be appreciated as well.

**AUGUST 7 – 8, 2015 (Friday-Saturday)**

**LOSTINE, OREGON**

The 2015 Lil' Switzerland Swap Meet near the Eagle Cap Wilderness will be held August 7 - 8 at the home of Linda & Howard Banks, 65028 Granger Road, Lostine, OR 97857 on August 7th & 8th. The event features "The Boneyard", where a thousand or more insulators will be sold for \$2 each in a benefit for Crown Jewels magazine. BBQ Saturday at noon. Camp on site or stay in nearby motels. For lodging and other info: HOWARD 541-569-2318 or [editor@cjow.com](mailto:editor@cjow.com)

**AUGUST 8, 2015 (Saturday)**

**MARTINSBURG, WEST VIRGINIA**

16th annual Shenandoah Valley Insulator Show and Sale sponsored by the Chesapeake Bay Insulator Club. Show is Saturday August 8, 2015 from 9:00 AM to 1:00 PM at the Calvary United Methodist Church, 220 W. Burke St., Martinsburg, West Virginia. Dealer set up begins at 7:00 AM. 8 foot tables are \$25 for the first table and \$20 each additional. Admission is \$1. Info: JEFF HOLLIS 304-671-5359 or email [redo-ak1953@gmail.com](mailto:redo-ak1953@gmail.com)

**AUGUST 9, 2015 (Sunday)**

**SILVERTON, OREGON**

The 2015 Silverton swap will be at the same location. Coolidge/Mc Claine park. Walking distance from historic downtown. Minutes from the Oregon Gardens and just a short drive to Silver Creek Falls. Several antique and 2nd hand stores close by.. Great restaurants and a beautiful park. Please RSVP if you'll need a table or if you'll be joining us for lunch Sunday at noon. Questions???? [dmc43@me.com](mailto:dmc43@me.com) 503 -873-7123 (after April 1st.) Cell 971-240-8968.

**SEPTEMBER 11 – 13, 2015 (Friday-Sunday)**

**MERRITT, BRITISH COLUMBIA, CANADA**

Annual insulator swap at the Insulator Ranch, 3045 Spanish Creek Place, Merritt, B.C. Use exit 286 off Coquahalla Hwy 5, and head towards Merritt. Turn left onto Coldwater Road, proceed 4 blocks to Spanish Creek Place. Just follow the "Insulator Show" signs. Motor homes, trailers, RV's all welcome. Bev provides a delicious Chili and rolls lunch on Saturday, and a coffee, bacon and eggs breakfast on Sunday morning. There is no charge; our way of putting something back into a great hobby. Tables are provided. Info: BOB SCAFE 250-378-2787 or email: [bobscafe@telus.net](mailto:bobscafe@telus.net)

**OCTOBER 4, 2015 (Sunday)**

**CHELSEA, MICHIGAN**

Huron Valley Bottle and Insulator Club's annual Antique Bottle and Insulator Show, including old advertising, lightning rod items, railroad items, and many other tabletop antiques and collectibles. Sunday, October 4th from 9 am to 3 pm. Admission \$3 for adults over 16 years of age. Located at the Chelsea Comfort Inn Conference Center, Exit #159 North off I-94. Contact: MIKE BRUNER at 248-425-3223/[abbott4girl@sbcglobal.net](mailto:abbott4girl@sbcglobal.net) or ROD KRUPKA at 248-627-6351/[rod.krupka@yahoo.com](mailto:rod.krupka@yahoo.com)

**NOVEMBER 6 – 8, 2015 (Friday-Sunday)**

**SPRINGFIELD, OHIO**

45th Annual Mid-Ohio Show & Sale will be held November 6-8 at the Clark County Fairgrounds (Exit 59 off I-70), Springfield, Ohio. Friday hours are 3:00 to 6:00 PM. Saturday: 8:00 to 4:00. Sunday: 9:00 to ????. The Community Display for 2015 will feature "Lynchburg Glass". Info: [www.insulators.info/shows/springfield/](http://www.insulators.info/shows/springfield/) Contact: LOIS BLAIR 740-852-3148 or CURT BOSTER 614-301-5125; email: [cboster530@att.net](mailto:cboster530@att.net)



*Triple-Ridge Insulator Club  
Springtime In The Rockies*



6th

**ANNUAL SHOW & SWAP**

**INSULATORS\*\*INSULATORS\*\*INSULATORS\*\*INSULATORS**  
**\*\*BOTTLES AND RELATED COLLECTABLES\*\***

**SATURDAY - JUNE 13th 2015 From: 7:30am - 3pm**

2905 N Cascade Ave Colorado Springs, Co 80907

(just off I-25 at the 145 exit )

**\*Free admission\***

**\*Free Tables\*** (call to reserve while they last, or bring your own)

**\*Free Lunch\*** (donations appreciated)

**\*Free Appraisals\*** (want to know what it's worth, bring it)

**Plenty of Indoor & paved out door space is available**

**\*\*Please Contact/RSVP one of the following so that we have plenty of food, chairs and tables\*\***

**Dan Gauron:** [Alyeskaco@comcast.net](mailto:Alyeskaco@comcast.net) or 719-492-0181

Michael Gaudy: [mkgaudy@gmail.com](mailto:mkgaudy@gmail.com) or 970-215-0040

Matt Poage: [tric@clubs.insulators.info](mailto:tric@clubs.insulators.info) or 720-341-2455

**Come Join the Fun**

**\*\*Show Hosts Not Responsible For Accidents\*\***



Upcoming Shows list maintained by: **Information Director Christian Willis** [information@nia.org](mailto:information@nia.org)  
**Send all changes and updates to above email address.**



# NIA Board & Chair Contact Info.

## Board of Directors

### President

**Don Briel**, NIA #7218  
P.O. Box 188  
Providence, UT 84332  
[president@nia.org](mailto:president@nia.org)

### First Past President

**Lou Hall**, NIA #7185  
363 W. Stuart Ave.  
Fresno, CA 93704  
[1stpastpres@nia.org](mailto:1stpastpres@nia.org)

### Second Past President

**Bob Stahr**, NIA #4186  
515 Main St., Unit 403  
West Chicago, IL 60185  
[2ndpastpres@nia.org](mailto:2ndpastpres@nia.org)

### Western Region VP

**Ron Yuhas**, NIA #1993  
895 Lodestar Rd.  
Helena, MT 59602  
[westernvp@nia.org](mailto:westernvp@nia.org)

### Central Region VP

**Barry Spitler**, NIA #8803  
416 South Water St.  
Cambridge, IA 50046  
[centralvp@nia.org](mailto:centralvp@nia.org)

### Eastern Region VP

**Matt Grayson**, NIA #387  
34-30 78th Street, Apt. 2-F  
Jackson Heights, NY 11372  
[easternvp@nia.org](mailto:easternvp@nia.org)

### Information Director

**Christian Willis**, NIA #5185  
PO Box 2797  
Parker, CO 80134  
[information@nia.org](mailto:information@nia.org)

### Membership Director

**Vickie McConnachie**, NIA #8395  
P.O. Box 1466  
Corrales, NM 87048  
[membership@nia.org](mailto:membership@nia.org)

### Secretary

**Steve Roberts**, NIA #7935  
2404 Mansker Dr.  
Madison, TN 37115  
[secretary@nia.org](mailto:secretary@nia.org)

### Treasurer

**Bill Rohde**, NIA #1219  
P.O. Box 28  
Colusa, CA 95932  
(530) 701-4377  
[treasurer@nia.org](mailto:treasurer@nia.org)

## Committee Chairpersons

### Authentication & Classification

**Paul Greaves**, NIA #2685  
8830 Benton Acre Rd  
Granite Bay, CA 95746  
[authentication@nia.org](mailto:authentication@nia.org)

### Awards and Recognition

**Gene Hawkins**, NIA #421  
3847 North Prairie St  
Warsaw, IN 46582  
[awards@nia.org](mailto:awards@nia.org)

### Ethics

**David Wiecek**, NIA #3225  
63 Reinman Rd  
Warren, NJ 07059  
[ethics@nia.org](mailto:ethics@nia.org)

### Historian

**Miles McLall**, NIA #8548  
480 W. Juniper Road  
Dammeron Valley, UT 84783  
[historian@nia.org](mailto:historian@nia.org)

### NIA Commemorative Coordinator

**Carolyn Berry**, NIA #4336  
1010 Wren Court  
Round Rock, TX 78681  
[commemorative@nia.org](mailto:commemorative@nia.org)

### Research & Education

**Jacque Linscott-Barnes**, NIA #1380  
3557 Nickaus Drive  
Titusville, FL 32780  
[education@nia.org](mailto:education@nia.org)

### Development Advisor

**Michael L. Green**  
2513 S. Balsam St.  
Lakewood, CO 80227  
(303) 549-5028  
[donations@nia.org](mailto:donations@nia.org)

### Product Marketing

**Tina Rienstra**, NIA #8045  
6527 W. 93rd Ave.  
Crown Point, IN 46307  
[niaproducts@nia.org](mailto:niaproducts@nia.org)

### Promotions

**Jim White**, NIA #1127  
7990 Windcombe Blvd  
Indianapolis, IN 46240  
[promotions@nia.org](mailto:promotions@nia.org)

### Rules & Procedures Advisor

**Roger Ziesak**, NIA #8919  
8865 Grouse Dr  
Missoula, MT 59808  
[procedures@nia.org](mailto:procedures@nia.org)

### Scholarships

**Kay Bryant**, NIA #4099  
8061 S.E. Helen Terrace  
Hobe Sound, FL 33455  
[scholarship@nia.org](mailto:scholarship@nia.org)

### Drip Points Editor

**Shaun Kotlarsky**, NIA #4993  
2475 W Walton Blvd  
Waterford, MI 48329  
[publications@nia.org](mailto:publications@nia.org)

### Drip Points Ad Manager

**Christian Willis**, NIA #5185  
P.O. Box 2797  
Parker, CO 80134  
[admanager@nia.org](mailto:admanager@nia.org)

### Webmaster

**Bob Berry**, NIA #1203  
1010 Wren Court  
Round Rock, TX 78681  
(512) 255-2006  
[webmaster@nia.org](mailto:webmaster@nia.org)

### NIA Events Advisor

**Darryl Wagner**, NIA #8671  
14615 NW Skyview Av  
Smithville, MO 64089  
(816) 719-0801  
[show@nia.org](mailto:show@nia.org)

### Special Projects Advisor

**Mike Doyle**, NIA #5932  
1805 E Country Court  
Visalia, CA 93292  
[projects@nia.org](mailto:projects@nia.org)

### Finance Committee

**Bill Snell**, NIA #2624  
11427 E. Scarritt Ave.  
Sugar Creek, MO 64054  
(816) 769-7455  
[finance@nia.org](mailto:finance@nia.org)





National Insulator Association  
10801 N. 24th Ave. Ste 103  
Phoenix, AZ 85029-4712

### Drip Points Magazine publishing schedule

Issue	Number	Deadline	Mailing Date
Spring	3	February 10	March 1
Summer	4	May 10	June 1
Fall	1	August 10	September 1
Winter	2	November 10	December 1



Find us online at: [nia.org](http://nia.org) | [facebook.com/groups/nia.org](https://facebook.com/groups/nia.org)

