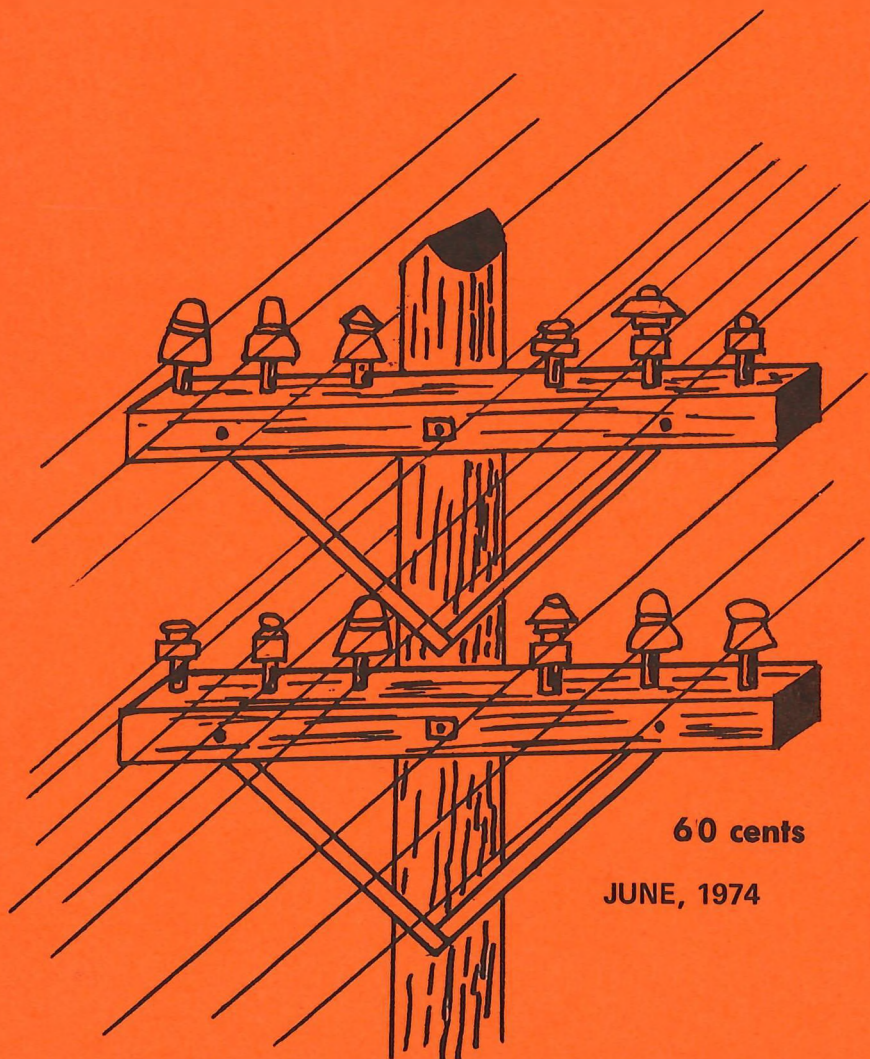


CROSS ARMS

an
insulator collectors'
magazine



60 cents

JUNE, 1974

367 Signal Hill Road
King of Prussia, Pa. 19406

CROSS ARMS--dedicated to enriching the knowledge of the insulator collector, and enlarging the ranks of the insulator collecting hobby.

PUBLISHING POLICY

1. CROSS ARMS will publish any information available concerning insulator shows and swap meets.
2. Any information received by CROSS ARMS before the 8th of the month will be published and in the hands of our subscribers by the 5th of the next month.
3. All ads are kept confidential until they are published.
4. We will do our best to make sure all advertisers are reliable but cannot be held responsible for the validity of their copy nor for their performance. We accept no responsibility for errors except to reprint the incorrect portion of the ad in a later edition.
5. Send black and white prints or copies as they will reproduce with more satisfactory results. All material will be returned to the sender if specified, all other material becomes the property of CROSS ARMS.

CROSS ARMS

An Insulator
Collector's Magazine

Vol. 3, No. 5

June, 1974

Editor	James Garrity
Western Representative	Addie Tasem
Junior Collector Section	Donald Welsh
Production	Mary Alice Garrity

CROSS ARMS is published monthly by James Garrity at 367 Signal Hill Rd., King of Prussia, PA 19406. Tel: (215) 265-0962.

Single copy	\$.60	Back issues 60¢ ea.
Subscription price (12 issues)	\$6.00	(not all issues avail- able.)

Second class postage paid at Norristown, PA

Copyright 1974 by CROSS ARMS

TABLE OF CONTENTS

	PAGE
Classified Ads	33
Collecting by Chuck & John Fischer	18
EC&MC ^o S.F. Insulators by F. Kettenburg	5
Part II	8
Fifth National Show	14
Fry Glass Co.	24
Helpful Hints to the Would-Be Show Host by Jack Snyder	12
Insulator Description Standards by B. Wilson	31
Insulators by Gerald Brown	16
Kingman, Arizona Show by Addie	20
Market News	13
N. I. A. News	15
Shows and Swaps	2
T-H. E. Co. by Jarl Anderson	29

SHOWS AND SWAPS

JUNE 8-9

Fort Scott, Kansas

4th Annual Insulator and Barbwire Show at the 4-H Bldg., Fairgrounds, 22nd & Houston. Info: Paul O. Schroadter, 912 S. Margrave, Fr. Scott, KS 66701.

JUNE 22-23

Memphis, Tennessee

Memphis Bottle Collectors Club Show and Sale. Fairgrounds-Pipkin Bldg. Info: Larry McCage, Box 28791, Memphis, TN 38128.

JUNE 29-30

Hershey, Pennsylvania

5th National Insulator Show & Sale & N. I. A. business meeting at the Hershey Motor Lodge. Info: Steve Bobb, 610 Northampton Rd., Norristown, PA 19401 Ph. (215) 539-6533.

JULY 13-14

Humboldt, California

Humboldt Antique Bottle Club's 9th Annual Bottle & Relic Show & Sale, Redwood Acres Fairgrounds. Info: Bob Specht, Box 446, Trinidad, CA 95570.

JULY 20

Little Rock, Arkansas

2nd Annual Show & Sale of Little Rock Antique Bottle Collectors. Info: L. R. A. B. C., P. O. Box 5003, Little Rock, AR 72205.

JULY 27-28

El Paso, Texas

3rd Annual El Paso Insulator Club Collector's Show, National Guard Armory, 9100 Gateway-N & Hondo Pass. Info: Bob Keyes, 1032 Burgess, El Paso, TX 79904.

AUGUST 31-SEPT 1

Fairview Park, Ohio

Great Lakes Insulator Show, American Legion Hall,
22001 Brook Park Rd., exit 9 on Ohio Turnpike. Info:
John McDougald, 4592 Andorra Drive, North Olmsted,
Ohio 44070. ph. (216) 779-8232.

AUGUST 31-SEPT. 1

Hutchinson, Kansas

Insulator Bottle and Collectors Show, Sports Arena,
Info: George Phillips, Box 1791, Hutchinson, KS 67501.

SEPTEMBER 8

Lockport, New York

Western New York Bottle Collectors Association Show
and Sale, Sheraton Motor Inn. (Home of the historic
Lockport Glass Works.) Insulators, LRB's, Bottles,
Jars, go-withs & advertising. Dealers please con-
tact: A. George Bedford, 415 Washburn St., Lock-
port, NY 14094 (716) 433-9224.

SEPTEMBER 14-15

Kansas City, Missouri

Insulator-Bottle-Lightning Rod Ball Show and Sale
at Howard Johnson's, 1600 N. E. Russell Rd., Jct.
I-29 and I-35, Kansas City North. Info: Robert
Green, 1703 N. E. 72 Terr., Gladstone, MO 64118,
Ph. (1) (816) 436-0953.

SEPTEMBER 14-15

Salem, Oregon

O. B. C. A. Show & Sale at Oregon State Fairgrounds.
Info: Vona Wahlster, Rt. 2, Box 288B, Silverton,
OR 97381, (503) 873-4735.

SEPTEMBER 22

Freemansburg, Penna.

Forks of the Delaware Bottle Collectors Association
Antique Bottle Show and Sale at the U. S. Marine
Reserve Training Center, Pembroke Rd. Info: Al
Menio, 1203 North New St., Bethlehem, PA 18018.

SEPTEMBER 28-29

Columbia City, Indiana

The 2nd Hoosier Insulator Show, Swap and Auction,
Whitley County 4-H bldg. Info: Paul Houpt, 211 S.
Chauncey, Columbia City, IN 46725 (219) 244-5840.

SEPTEMBER 28-29

Clifton, Colorado

Western Slope Bottle Club of Grand Junction Show &
Sale. Lincoln Park Auditorium. Info: Leslie D.
Elliott, 3289 E 1/2 Rd., Clifton, CO 81520.

OCTOBER 18, 19, 20

St. Charles, Illinois

3rd Jumbo Show, Kane County Fairground. Free:
"Wheeler-Dealer" Day (Friday). 200 tables,
acres of parking. Info: Veneziano, 324 Hawthorne
Dr., Bensenville, IL 60106 (312) 766-3705.

OCTOBER 27

Cedar Rapids, Iowa

Insulator-Bottle Show at I. B. E. W. Hall, 1211 Wiley
Blvd S. W., Info: Dale L. Vincent, 283-22nd Ave.,
S. W., Cedar Rapids, Iowa 52404, ph. (319) 365-2480;
or Noel J. Motter, 2865-2nd Ave., Marion, IA 52302
ph. (319) 377-6041.

IT IS SUGGESTED THAT IF YOU WOULD LIKE
A CROSS ARMS RIBBON TO AWARD AT YOUR
SHOW THAT YOU PLEASE SEND IN A REQUEST
SO THAT WE COULD SEND THEM ON TO YOU.
PLEASE SEND REQUEST ON A SEPARATE
SHEET SO THAT IT WILL SPEED UP OUR
DELIVERY TO YOU.

Thank You,
Your Editor

E. C & MC^o S. F. INSULATORS

PART I

by Fritz Kettenburg

THE THREE DOME STYLES

The three dome styles are rounded, beveled, and squared. All EC&Ms have flat domes, with the top edge rounded beveled or squared. The two skirt styles are flared and straight.

The dimensions of these drawings have been scaled directly from insulators in my collection. No EC&MC^o SF insulators have been found in Alaska.

- A. The rounded dome, flared skirt is the only EC&M without a mold dot. I have observed rounded dome EC&Ms in the following colors: light green, dark lime green, dark emerald green, powder blue, washed out cobalt, cobalt, and dark ink blue.
- B. This squared dome, straight skirt is also known as "flat top, square dot" and "flat dome". Colors I have seen: green, aquas, dark yellow amber, dark olive amber, and blue.
- C. The beveled dome style has a distinct bevel on the top edge of the dome. This style has a rounded mold dot on the front skirt. Colors: aquas, and apple green.
- D. The beveled dome, sheetmetal moldline is the same as beveled dome 'C' except for the different moldline. This one is also known as the "tin mold" EC&M. Colors of this style I have seen include light blue, and aquas.

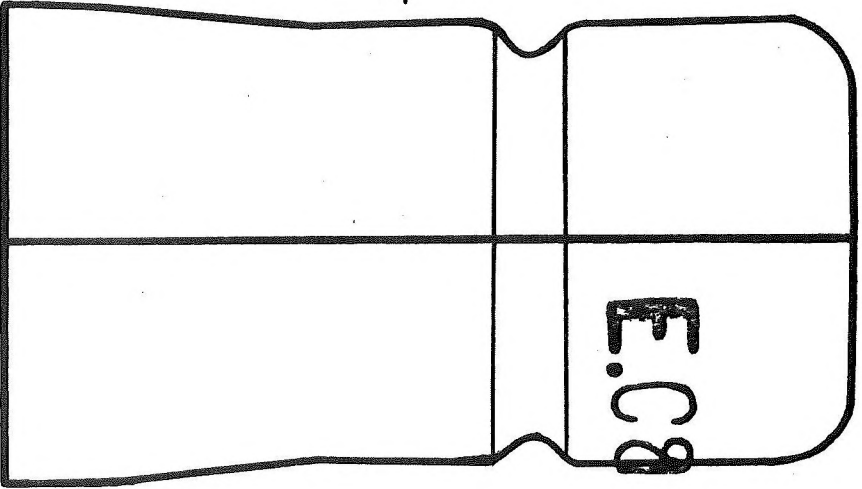
How many collectors know what the upside down embossed EC&M looks like? Coming soon:
EC&MC^o S. F. INSULATORS, PART II, THE UPSIDE
DOWN EMBOSSED EC&M AND RELATIVES.

ROUNDED DOME - FLARED SKIRT

SQUARED DOME - STRAIGHT SKIRT

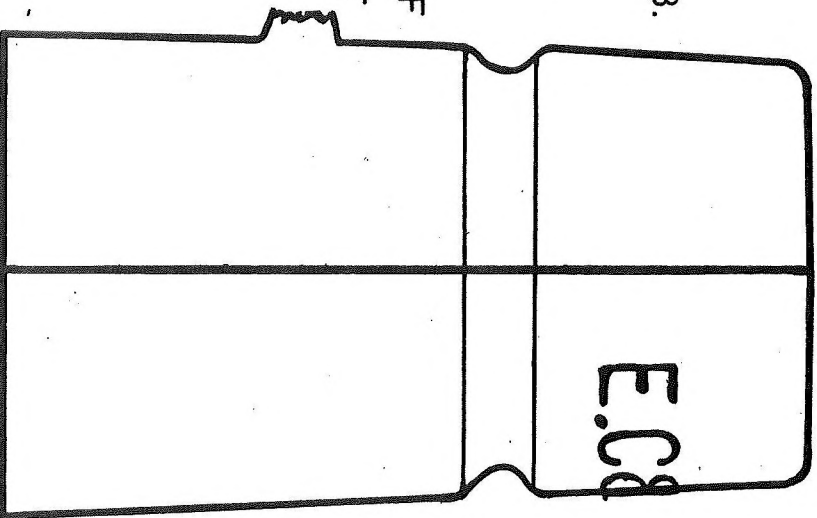
A.

NO
MOLD DOT

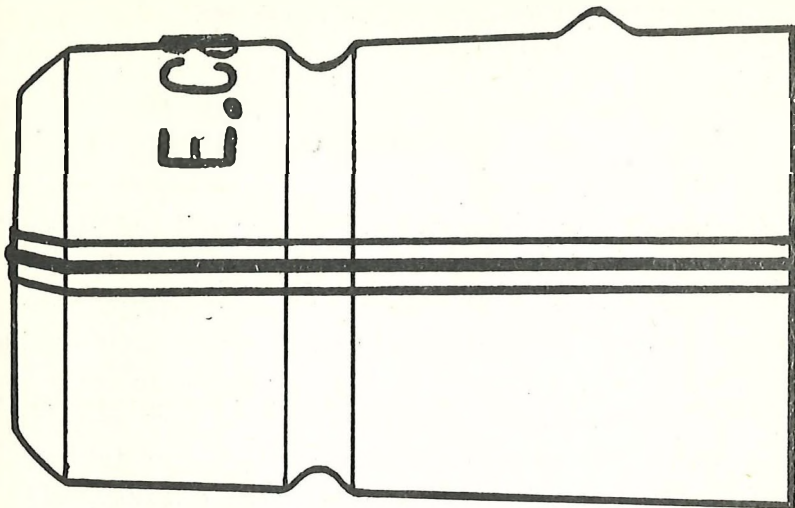


B.

SQUARED-OFF
MOLD DOT

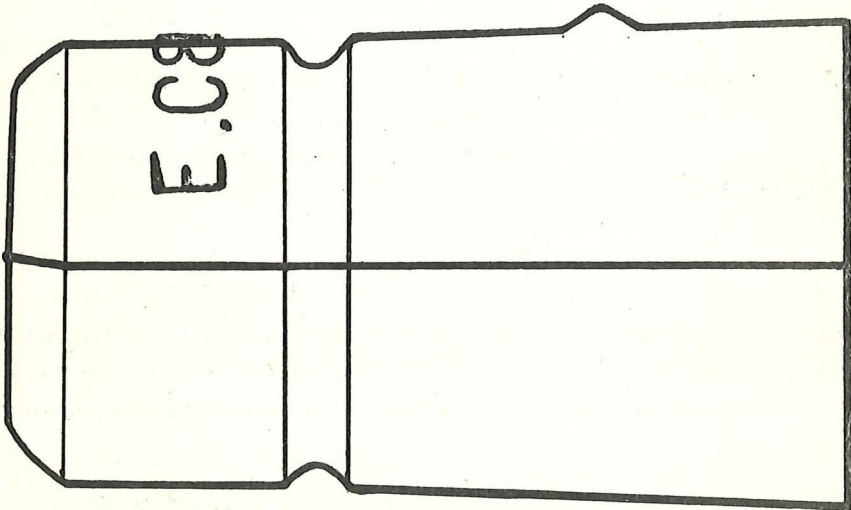


BEVELED DOME - STRAIGHT SKIRT
(SHEET METAL MOLDLINE)



D.

BEVELED DOME - STRAIGHT SKIRT



C.

ROUNDED
MOLD DOT

E. C & MC² S. F. INSULATORS
PART II

THE UPSIDE-DOWN EMBOSSED EC&M
AND RELATIVES

The upside-down embossed EC&M and the three others related to it have squared domes and a horizontal moldline around the insulator 3 7/8" from the top of the dome. All four have the same rounded mold dot. EC&M's F., G., and H. have a faint outline on the backside of the dome where the incorrect embossing was covered with a riveted plate. Height of these E. C. & Ms varies only between the horizontal moldline and the base.

E. The upside-down embossed EC&M is one of the rarest EC&Ms. The base on this one tapers down to about 1/8", is rounded on the bottom, smooth and finished quite nicely. This base is unique to the upside-down embossed EC&M. The vertical moldline over the dome terminates at the horizontal moldline. Besides my own, I know of only 1 1/2 other upside-down embossed EC&Ms. One is in V. N. M. condition, the other is just a "piece", and mine has a chunk of glass out of the skirt in back. Any others? The color is a moss green, a color I've seen in no other EC&M.

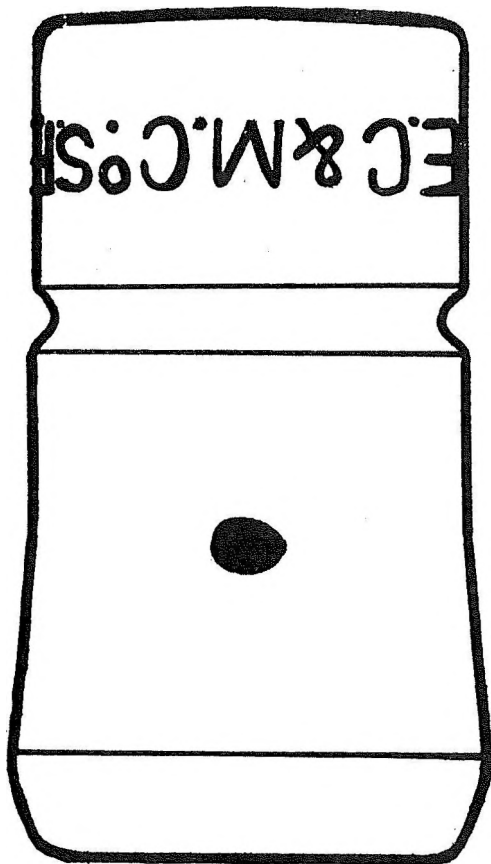
F. The squared dome, flared skirt is the corrected version of the preceding EC&M. This EC&M has the usual rough base and the mold line over dome cuts through the horizontal line to the base. The colors I have seen in this style are: dark opaque green, aqua, and cobalt.

G. Excepting for the straight skirt, this EC&M is the same as F. Colors I have seen include: aqua, light green, bubbly apple green, and yellow green.

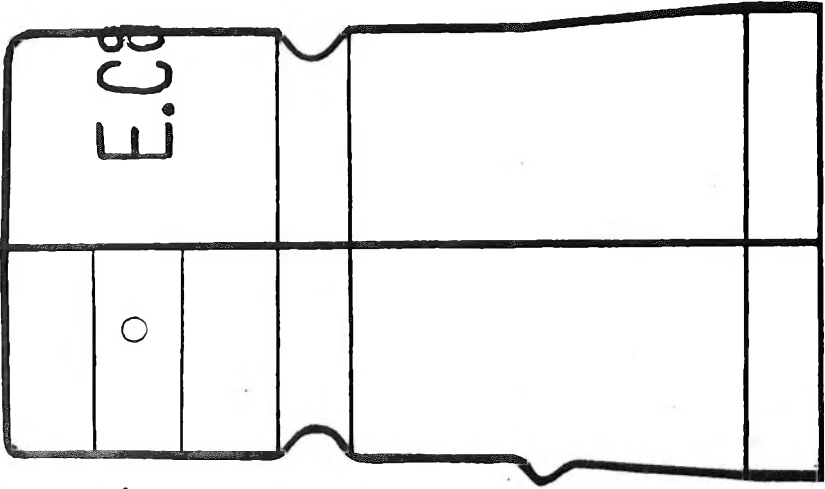
H. This EC&M is the same as G., excepting for the rough lumps of glass in the wire groove at both mold-line crossings and in front under the embossed M. Colors I have seen: aqua, dark yellow amber, and dark olive amber..

I have been collecting insulators for five years and specializing in EC&Ms for the past 2 years. I will gladly answer any questions concerning EC&Ms. If you have seen a color in any style that I haven't listed, please let me know the style (A-H) and color. Any other styles?

For the most information on EC&Ms (8 pages) see THE GLASS INSULATOR, A COMPREHENSIVE REFERENCE, by Gary Cranfill and Greg Kareofelas.



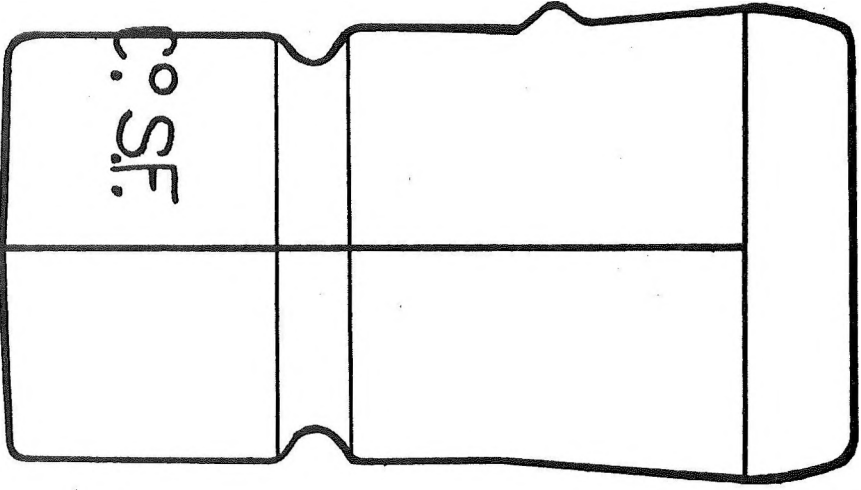
SQUARED DOME - FLARED SKIRT



F.

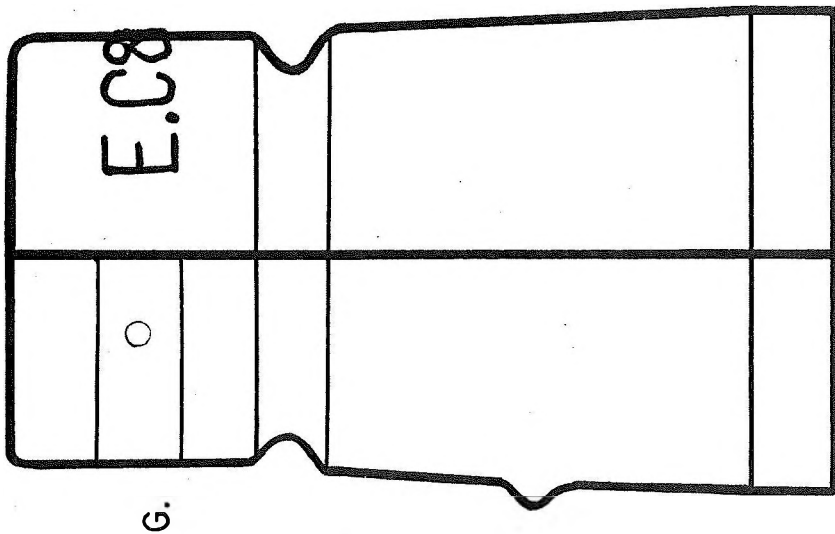


UPSIDE - DOWN EMBOSSED



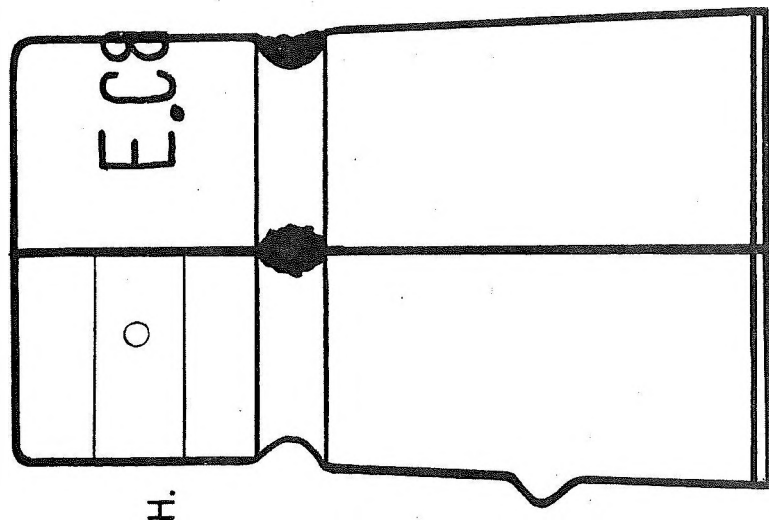
E.

SQUARED DOME - STRAIGHT SKIRT



G.

SQUARED DOME - STRAIGHT SKIRT



H.

$3\frac{11}{8}$ "

HELPFUL HINTS TO THE WOULD-BE SHOW HOST.

by Jack Snyder

Toledo, Ohio

Dear Jim,

Here's an open letter containing some helpful ideas on promoting a show. Promotion helps everyone, dealers and collectors alike. Some poorly attended shows are simply at fault because of little or no local promotion. By promotion I'm not talking about insulator magazine ads. I'm talking about free local newspaper, radio, etc. promotion.

.....in order of importance:

1. Local papers will gladly use an informative article (stamped; news release) with whereabouts and general information on insulators and your show. You can get a state almanac listing daily and weekly newspapers. Pick some of the area papers with a large circulation within a 100 mile radius of the show site. You can also take advantage of union papers, plant bulletins, antique papers, to name a few.

2. Radio stations are required by law to air community notes, this includes insulator shows. The almanac will list area radio stations also.

3. Television stations are also willing to cover special interest events. As I found out this year with a simple call to two stations.

4. "People Flyers" should be distributed at local flea markets, antique shops, etc. A "People Flyer" lists the date, hours, location and promoters but not the table rates and set-up time.

FREE ADMISSION in large letters is a big plus on the "People Flyer". Non-collectors and curiosity seekers who would normally by-pass the show because of the admission price may spend more than that fee on impulse buying.

5. Signs are very helpful to direct not only collectors but also the "Sunday" drivers.

I've probably missed some points but these are the most important.

Thank you for your time and space.

Editor's Note:

Jack Snyder of 244 Waggoner Blvd., Toledo, OH 43612 has accepted the position of Show Co-ordinator with the N. I. A. Anyone planning a future show should contact Jack as soon as possible. He will be able to tell you whether your show will possibly conflict with other shows.

MARKET NEWS

<u>Company</u>	<u>CD</u>	<u>Condition</u>	<u>Color</u>	<u>Prices</u>
Kingman, Arizona Show.				
Postal	U154	M	mottled brown	\$25
No Name	U395	M	brown	30
McLaughlin 20	164	M	emerald gr.	6
McLaughlin 16	121	M	clear	6
Gregory{rpd}	159		aqua	125
Base embossed	135	NM	aqua	30
Telegraphos	214	NM	amber	10
California	260	M	sage	35
California	201	NM	aqua	300
◇	190/91	M	purple	38
CGI CO	102	M	SCA	5

FIFTH NATIONAL SHOW

June 29-30

Hershey, Pennsylvania

Everything is moving along smoothly and everyone is looking forward to the first National Insulator Show every held here in the East.

Sales table rental is brisk and the display table reservations are increasing every day.

One problem area which everyone should be aware of---the Saturday night dinner is not a buffet dinner. It is a sit down dinner. This means the only tickets available for the dinner are those sold before the show. Dinner tickets will not be available for sale at the show. Dinner reservations must be made and paid for prior to June 10, 1974. Because of inflation the choice of dinner has been limited to one entree, i. e., roast top sirloin of beef, jardiniere which will include: appetizer, two vegetables, salad/dressing, roll & butter, and a beverage & dessert. The cost will be \$7.60 ea. Anyone wishing to purchase a dinner reservation must contact (by mail) Steve Bobb, 610 Northampton Rd., Norristown, PA 19401.

Reservations at the Hershey Motor Lodge (adjacent) to the convention center) must be made by mail by June 1. After that date it will be a first come-first served situation.

Those of you who wish to fly in, the Harrisburg Airport is 10 minutes away from the convention center. At Harrisburg airline connections can be made for anywhere in the United States.

***** Collectors note the N. I. A. business meeting will start at 8:00 PM June 29 and one does not have to have a dinner reservation to attend the meeting. The N. I. A.

meeting will be a very important part of the 5th National. Many aspects of the N. I. A. will be discussed voted on, and changed if necessary. The N. I. A. will be 1 year old at its meeting in Hershey, and every collector is urged to attend. You can help forge the future of the insulator collecting hobby--- if you attend the meeting.

See you in Hershey.

N. I. A.

NEWS

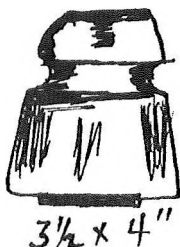
The Board of Directors has approved the application of Mr. and Mrs. Maury Tasem of El Cajon, California and selected San Diego as the site of the NIA 6th National Insulator Show.

The Board recommends that the 6th National be a 3 day show with the NIA business meeting Friday night and Social hour and dinner Saturday night.



FREDERICK L. GRIFFIN
PRESIDENT

INSULATORS
from Gerald Brown



brown - unembossed
Brown's UE 60

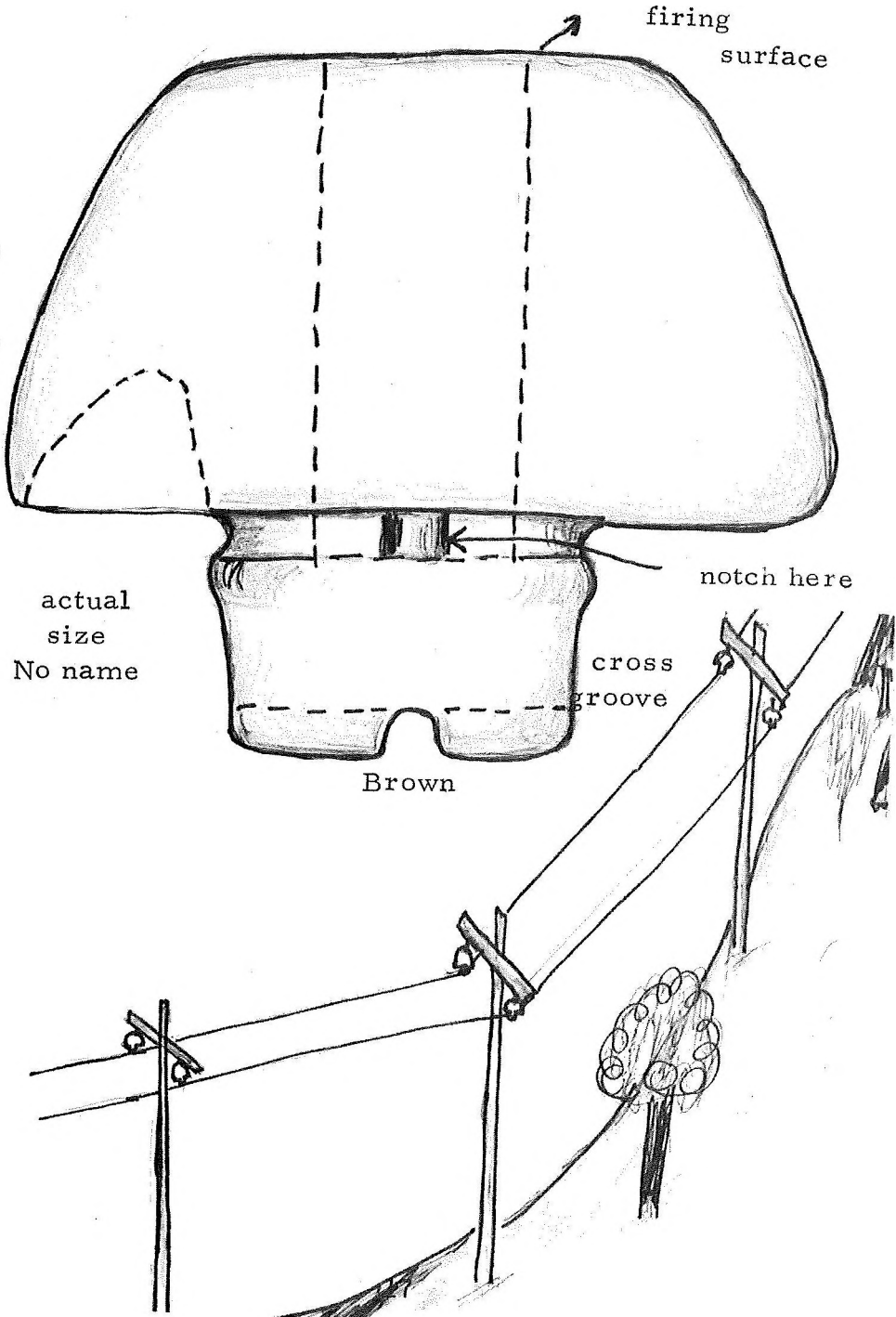
I heard this insulator being referred to as the Continental. Asking an explanation, I was told that this insulator was used on the first transcontinental TELEPHONE line.

This item has also been found with names, COOK, THOMAS, and Triangle M.

The upside-down insulator was used in mountainous country where the line was on a slope and there would be an up-pull on it. The insulators were placed under the cross arm with the wire holding groove down. The strain would thus be on the bottom of the insulator. (see following page.)

As far as I know, very few of these insulators have been found. The ones that I know of came from the Northern part of California. I consider them very rare. See Gerald Brown's Second Edition, page 135.

Up-side down insulator



firing surface

actual size
No name

notch here

cross groove

Brown

COLLECTING
by the Three Point System
by Chuck and John Fischer

Over the years, insulator collectors have sought new and better ways to expand and enhance their collections. Those ideas are far too numerous to mention, without undue respect to any individual collector.

Basically, all collectors are interested in the design, color, or embossing, of an insulator, or any combination thereof. These three concepts form the basis upon which insulator collections are founded. Upon these premises, it might be wise to consider acquiring new glass with the "three point system" in mind.

Frequently, many collectors seek to improve their collections by acquiring a new piece of glass which does not enhance their collection to its greatest extent. That is to say, one acquires a particular insulator disregarding its relevancy in the total spectrum of a more enjoyable collection. In view of what has been mentioned, we can derive three assets which can be assigned to each new insulator we may add to our collections. Regardless of the value of an insulator, a collector should benefit from incorporating all three characteristics in each new piece he may acquire, if possible.

The following system could be used as a criterion for expanding and enhancing a collection in a most efficient manner. Try to choose an insulator which satisfies your particular desire, but includes the following:

- Item A - A new or different color.
- Item B - A new or different CD number
- Item C - A new or different embossing.

An insulator which fulfills all three of these requirements would score three points, from a desir-

ability standpoint.

One which scores only on two items out of the three, would be less desirable, and of course if only one item were present, this would be the least desirable addition to a collection. We do not wish to correlate condition of an insulator to this concept, because this can be a very subjective issue in itself. It may be more desirable to acquire a near-mint insulator which scores three points as opposed to a mint insulator which scores only one point. It may also be beneficial to a particular collector to acquire a relatively inexpensive insulator which scores three points as opposed to an expensive insulator which scores only one point.

In summation, it might be more feasible to use this method of expanding your collection since fulfilling all three requirements in one insulator could leiminate the necessity of finding three insulators to fulfill each individual requirement. This could save additional effort and expense.

We have used this system and found it to be extremely helpful in building a collection with maximum effectiveness. We hope that all might benefit from this method. Good luck, and happy collecting.

Chuck and John Fischer.

KINGMAN, ARIZONA INSULATOR & BOTTLE SHOW
by Addie

April 6-7. An extravaganza it was, with 43 tables filled with collectables of all shapes, sizes and colors. The insulator dealers outnumbered all types of collectables with 16 dealers. It was very obvious that the price of gas did not stop the collectors.

Fun and sun was had by all. Insulators of the medium price range showed the most action with the big trade being a castle for a chambers.

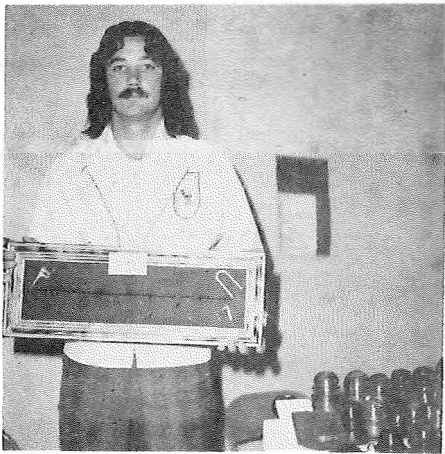
Sunday had a treat for all who noted! A pancake breakfast for a 'BUCK'! It was a great idea because no one had to go to find a breakfast. The proceeds went to the local "Retarded Childrens Fund."

I for one will be making the April '75 Kingman, Arizona Show.

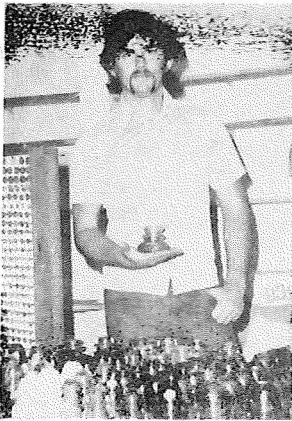


Show host "Rip" West and son.

Kingman, Arizona Show

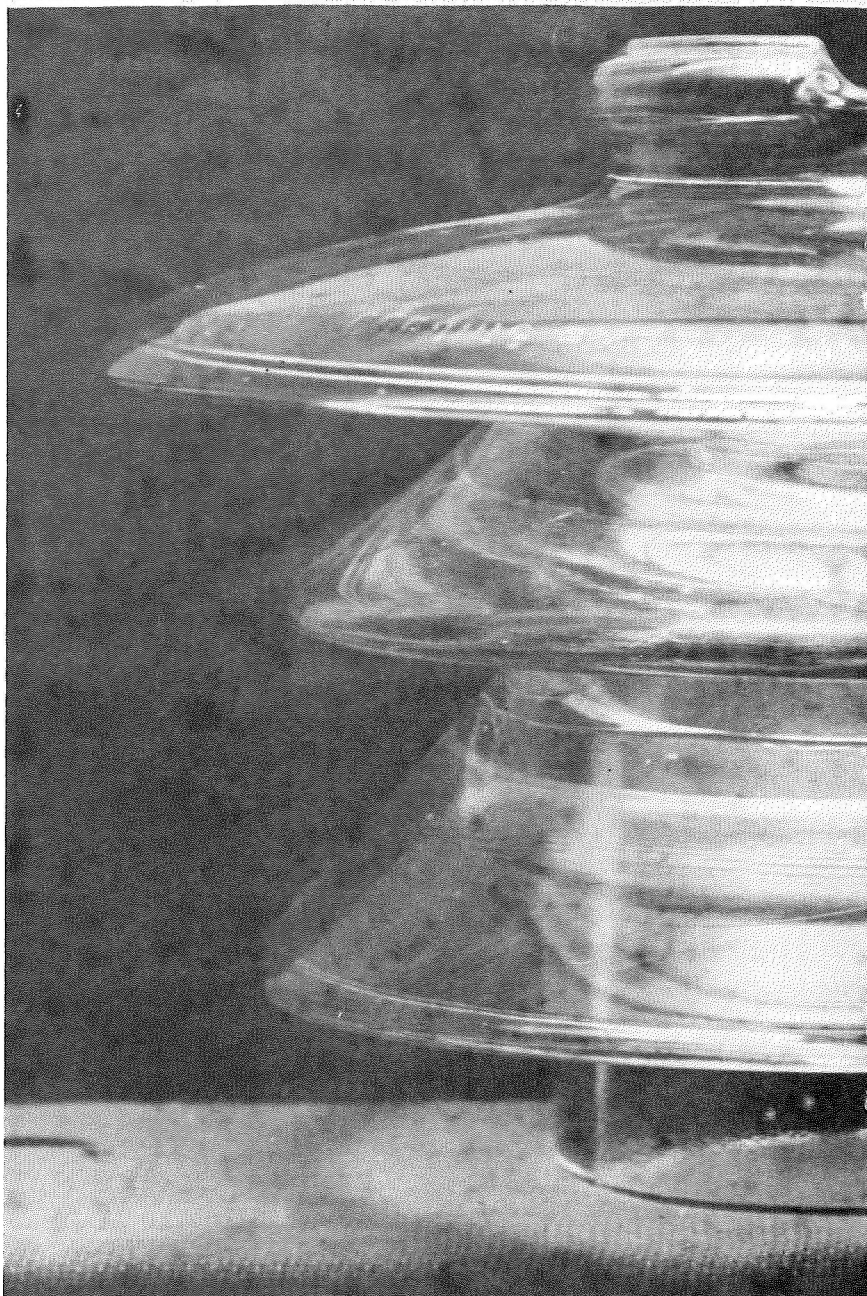


Left: Jim Bradshaw from San Diego, an insulator and barbed wire collector. He's holding a piece of barbed wire known as STAR ROWELL, and valued at \$350.00. Right: CD 190/191 California, yellow.

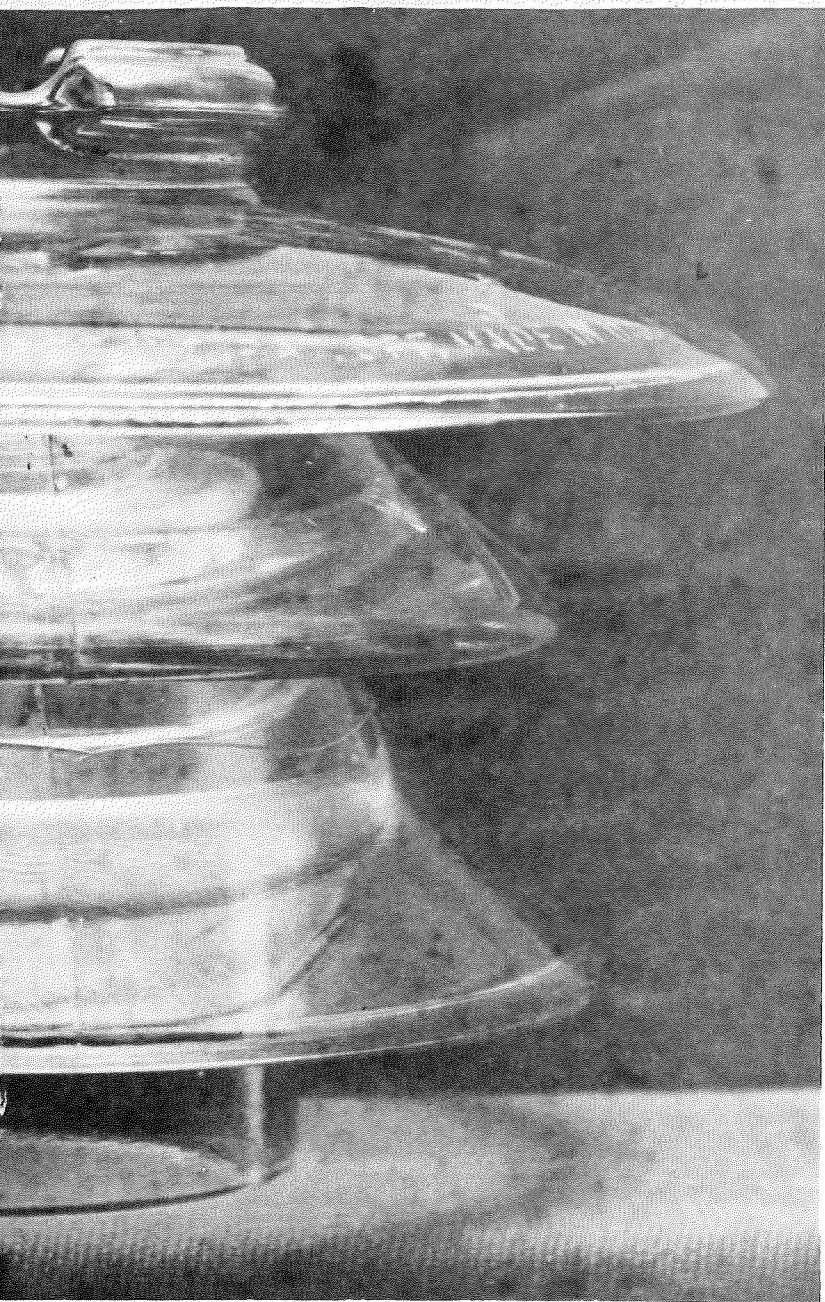


Left: Jerry Gibby of Taft, CA. He is a McLaughlin speciality collector. Right: a picture of Doug Selby (on left) from Burbank, CA. He is holding a CD 190/191 yellow California, and Ron Griffin (on right) is holding a CD 201 California in aqua.

CD 331- Pyrex 701 (actual size 10 15/16" high X 15" wide)
manufactured and weighs about 37 1/2 pounds. From



de) This is the largest single piece insulator ever
m Evelyn and Marion Milholland of Sequim, W.A.



FRY GLASS COMPANY
Rochester, PA

Fry Glass Co. manufactured everything in the glass line. Dishes, lenses, etc.

The insulator collectors interest with Fry Glass Co. stems from the fact that the company manufactured insulators. The following pages contain excerpts from the company catalog #9 & 10, dated September 1, 1927. This information was compiled by Roy Licari of Washington, DC.

FRY'S
Oven Glass

Patented May 8, 1917 · May 27, 1919

A dish for every
oven use



H. C. FRY GLASS COMPANY
ROCHESTER · PENNSYLVANIA

Fry Quality



Glassware

FOREWORD



IN preparing this catalog illustrating a choice collection of quality items made by the H. C. Fry Glass Company, we desire to point out three things. *First:* Selected items for table use of Fry quality cut glass and a new line of high grade table ware, also Beaver Valley Glass Works' line of refined etchings. The H. C. Fry Glass Company has specialized on quality table glassware since 1901. We also make oven glass for baking purposes, lenses, reflectors and heat resisting glass for insulators. The entire line is too large to illustrate in one book, therefore separate booklets are issued for different specialties. *Second:* This booklet will aid the buyer in making choice selections of good selling items for table use. The cut glass and stemware shown in this booklet are made of superior quality glass known as lead glass, which compares favorably with the best manufactured anywhere in the world. Materials used are the finest obtainable, carefully selected and analyzed. We have avoided showing any items that are not universally used and popular. *Third:* That we have a model factory, as the picture shows, one that is more completely equipped than any of its class in the world, backed in management by more than fifty years of experience in glass making, with an ideal location, employing the most skilled labor that money can secure; and linked with this the many patented devices which not only help produce a superior quality, but save considerable of the cost, thereby enabling the purchaser to obtain the very best at a moderate price. In fact, we give the trade the benefit of an establishment and product never before equaled in the history of the world. That this is quite generally appreciated by the trade is evidenced by the ever increasing demand for our products and the international reputation we enjoy.

Dining Table Glassware Made Strong Enough for Cooking Purposes

The modern housewife is daily becoming more thoroughly familiar not only with the attractive appearance, but also the superior quality of FRY'S OVEN GLASS.

The natural beauty of this splendid dining table-ware, that has been made strong enough for cooking purposes, is taking a firmer hold on the housewife's affection every day.

Fry's Oven Glass has a beautiful PEARL tint that is unmistakable, it is in fact the only Cooking Glassware that is made in this delicate coloring.

As the light varies, so does the dominant color of Fry's Oven Glass; in the gaslight, lamp-light, electric-light and day-light this beautiful iridescent pearl glass takes on new and varied hues.

Its unusual tensile strength which practically eliminates all chance of Oven breakage, is the prime factor in its increasing popularity and the steady growth of our business.

Although Fry's Oven Glass resists a higher temperature than other glass, it is well to remember it is glass, and it should be handled as such. It does not chip like ordinary glass and it will not crack and craze like china, but it will not withstand knocks as if it were wood or iron. It may be broken by dropping on the floor or by a sudden blow.

Caution

In removing this glass from the oven, a dry cloth should be used. FRY'S Oven Glass is made to withstand sudden changes in temperature, from hot to cold and vice-versa but reasonable care should be exercised.

Guarantee

Fry's Oven Glass is guaranteed against oven breakage for two years from date of purchase, provided the above precautions are heeded.

Dealers have our authorization to replace without charge every piece of Fry's Oven Glass that breaks in the oven, and we guarantee to reimburse our dealers for each and every piece so replaced. New pieces of equal size and value will be sent to the dealer on receipt of claim.

We do not guarantee against breakage in transit. Fry's Oven Glass is packed by expert packers and delivered to common carriers in good condition, at which point our responsibility ceases. Breakage in Transit claims should be made against the transportation company.

Fry Quality

Glassware

Founded
by Henry C. Fry in 1901, after a destructive
fire had destroyed his other factory, known
the world over as "The Rochester Tumbler
Company."

The above plant covers many acres of
ground. There are four large furnaces of 64
pot capacity, also one large and one small
tank. The principal articles manufactured
are Blanks for the cut glass trade, the fam-
ous Fry Oven Glass for baking purposes, Cut
Glass, Parabola and Motion Picture Lenses,
refined Plate and Needle Etchings, Stemware,
Table Tumblers, Cylinders for gasoline
pumps, as well as numerous other specialties.
Barrels, boxes and other containers for
packing are made in the above factory.
The natural gas used is brought in through
fifty miles of pipe line from wells owned by
the Company. A rest room is provided for
female employees, one of the first plants in
Pennsylvania to install such a room. The
administrative building is large, modern
and handsome in appearance. The first
floor or basement contains samples of blanks
for cutting. The second floor houses all the
administrative bodies that care for the
business of the plant, while the upper floor

besides housing several of the superintendents and Oven Glass Sales Department, displays samples of all the finished products. A photograph gallery and drawing studio, where all designs are made, photographed, tested and adopted, is also located on this floor. An up-to-date laboratory is maintained under the supervision of a competent chemist.

About 1600 people are employed, with a payroll of over \$1,000,000.00 per year.

For years, the company has encouraged higher education among its employees, even to the extent of maintaining a thirty piece band directed by a paid instructor and considered one of the best semi-professional bands in the State of Pennsylvania.

Mr. H. C. Fry conceived the idea of a club house to be conducted along the lines of a Y.M.C.A. This is known as "The Welcome Club," and any man found worthy in the Beaver Valley, is privileged to become a member.

A beautiful brick school house, where the foreign born employee is taught to become 100 per cent American, is also a part of the factory.

The above brief history is printed herein simply to give the trade a perspective of our plant and an acquaintance with a few of the many articles we manufacture.



H. C. FRY GLASS COMPANY

Rochester, Pa.

T - H. E. CO.

by Jarl Anderson
East Freetown, Mass.

A couple of chilly, not-so-long-ago, winter nights found me drifting through the past. This in the form of an old 1892 city directory for the city of Lynn, Massachusetts. Lynn being the home of the Thomson-Houston Electric Co. (T-H. Co.). . a name surely familiar to us all.

The main office of T-H. E. Co. was apparently located at 620 Atlantic Ave. in Boston, Mass., but the manufacturing plant itself seems to have been located at 42 Centre Street in Lynn. The city of Lynn is located approximately five miles north of Boston.

To give a little idea of the size of T-H. E. Co. in 1892, there were in excess of 1,600 Lynn residents employed there as listed in the directory. Remember, this figure is from the Lynn directory only. . other local directories would no doubt increase this employee figure handsomely!

Some were listed by occupation. These included 46 foremen, 20 clerks, 13 machinists, 11 draughtsmen, and 7 electricians. Other specific occupations listed as being employed by T-H. E. Co. were engineer, secretary, stenographer, carpenter, bookkeeper, time-keeper, and inspector. Also, A Mr. Daniel M. Barton was Production Manager and Mr. James B. Cahoon was Manager. The fellow who may have purchased some of the insulators we collect was Purchasing Agent Fred W. Webster. . . . and Mr. G.H. Lewis, Shipping Agent, may have shipped them to our local power company. Benjamin F. Ricker was a Janitor, incidentally, and this one is a real puzzler - Mr. Frank C. Sargent was listed as EXPERT! An expert in what?that's anybody's guess at this point in time. Oh yes. . . . T-H. E. Co. employed a Glass Blower, Fellow by the name of Walter Chase. If there are any T-H. E.

Co. insulators out there that don't seem to fit into any particular known manufacturers types, perhaps Mr. Chase had something to do with it. It's a thought. . . but nothing more.

As far as the Thomson portion of the company name goes there were four Thomsons listed in the Lynn directory of 1892. They were:

Mr. Charles E. Thomson (rooms at 98 Warren St.)

Mr. David P. Thomson (boards at 49 Arlington St.)

Mr. Millard B. Thomson (20 New Park St.)

- and the most familiar Thomson name -

Mr. Elihu Thomson (listed as residing in Swampscott, Mass, the town next to Lynn)

No Houstons were listed in the Lynn directory.

1892 was the last year T-H. E. Co. was known as such, incidentally. It was in the fall of that year that the Thomson-Houston Electric Co. merged with the Thomas Edison Co. to form the General Electric Co.

An ad for T-H. E. Co. in the directory I have reads as follows:

THOMSON-HOUSTON ELECTRIC CO.

* Manufacturers Of *

Electrical Apparatus for

Every Description of Electric

Lighting and The Electrical

Transmission of Power.

620 Atlantic Avenue, Boston.

INSULATOR DESCRIPTION STANDARDS

by Bob Wilson

These are the recommendations of the Standard and Ethics Committee. It is suggested that all collectors take time before the National to look over the recommendations to see what additions and subtractions necessary and be ready with intelligible comments at the N. I. A. business meeting, June 29.

MINT:

An insulator that would be considered as perfect if not for imperfections during manufacture or those caused by maker. Irregular drip points or base--too much or not enough glass--flashing--burst bubbles--distorted from being pulled out of mold too soon--mold imperfections--double strikes--weak embossing--lopsided--etc. would all be permitted. However, if the imperfections are extensive or would devalue the insulator, they would be explained.

V. N. M. or Very Near Mint would refer to very minor types of damage--B-B dings--wire cuts--one or two missing drip points--slight scratches--a very minor crack--minor thread damage--insulator should have to be examined closely in order to observe damage. Damage is so minor that insulator would still be priced close to a mint one.

DAMAGED:

All other insulators will be referred to as damaged. All types of damage or blemes will be noted and fully described. Location on insulator will be described if pertinent. If the entire front of insulator

is mint, it may be referred to as displaying mint only if all other damage is fully described. Some acceptable phrases are: Chips--flakes--bruises--strain cracks--and missing embossing should be explained. Irradiation--frosted glass or sick glass should be noted. Cracks--internal and external; if a coin would conceal the damage, it can be expressed as:

dime sized	flake	chip	bruise
nickel sized	"	"	"
quarter sized	"	"	"
50¢ sized	"	"	"

Satisfaction should be guaranteed with a 5 or 10 day return privilege.

A recommended method on better glass is to trace the insulators outline using Milholland's Book and then actually showing size and location of damage on tracing.

The enclosed methods of describing the condition of insulators is being published prior to the National Show in Hershey, so that every member can read them, study them, perhaps improve them and be able to vote on them at the National.



NEW OFFICERS ELECTED

Spring has arrived and for the Insulator Collectors Club-San Diego County, new officers have been selected for the upcoming year. The past President, Dennis Kotan, presented the President's gavel to Maury Tasem. The Vice-President selected is Lenny Philbrook, Secretary is Helen Wilson, and Treasurer is Bobbie Cox. The club membership is presently 77. Our monthly newsletter keeps all members informed on what's happening here. If you'd like we'd be glad to send you an application form. You'll be glad you did.

CLASSIFIED ADS

"Paying top cash prices" for threadless and rarer types insulators. I'm collecting threadless so can afford to give big trades or cash. Also buying other types one or whole collections--what have you for sale or trade. Larry Veneziano, 27 W. 115 Vale, West Chicago, IL 60185.

9

Wanted, any foreign insulators, black and white pictures, and information for future book on foreign insulators. Contact Gene Bond, 15 East Camden Ave., Moorestown, New Jersey, 08057 or call (609)-234-3926 (9)

PORCELAIN INSULATORS GUIDE BOOK FOR COLLECTORS, the standard reference for pintype porcelains. Universal Style Chart with all U-number scale drawings. Markings, company histories, prices etc. Hardbound, 206 pages, \$10 postpaid. Also Supplements A and B, \$1.95 each. From author Jack H. Tod (CA), 3427 N. 47th Place, Phoenix, AZ 85018.

FOR SALE OR TRADE: 190/191 PRR. Jay Barley, R.D. 1, Bodine Rd., Chester Springs, PA 19425.

FOR SALE: CD 110 Brookfield, M \$75.00; CD 113 Armstrong's No. 13, clear \$10.00; CD 133 B.G.M. CO. SCA, VNM \$20.00; CD 252 Knowles - dated w/prism, M \$22.00; CD 133 American (backward N) some base chips \$15.00; CD 106.3 Duquesne, aqua, VNM \$6.00; CD 162.5 PLW, M \$22.50; CD 162 Brookfield #38, aqua, VNM \$13.00; CD 156.1 base embossed Pat. Sept 18, 1881, M \$22.00; U-179 dome embossed PRR, VNM \$10.00. Postage and insurance extra. Ed Szymala, J-137 Belmont Plaza Apts., King of Prussia, PA 19406 (note 185.2 B. E. L. should have been \$55.00)

PORCELAIN INSULATORS FOR SALE

U-15	Brown unemb. (PHV) pony	M	\$3.00
U-26	Brown unemb. (PHV) pony	M	3.00
U-32	Blue emb. D pony	M	4.00
U-42B	Tan unemb., pony	M	3.00
U-46	White unemb. (Thomas)	NM	3.00
U-47	White emb. PP inc pony	M	4.00
U-47	Brown emb. PP inc. pony	M	4.00
U-52A	Brown unemb. (PHV) pony	M	3.00
U-73	Brown unemb. pony	M	3.00
U-118	Brown emb. JD beehive	NM	5.00
One of each of the above (10 insulators) \$27.00			
U-47	White pony dome emb. FEDCO	NM 9, M	12.00
U-76	White pony 4 wire grooves	-	
	unemb. G	NM15 M	20.00
U-179	Brown unemb. PRR	NM	4.00
U-173 & 174	Brown Dry Spot, some w/wire (ea)	M	10.00
U-184	White Harloe 3 date good	\$45, NM\$75 M	90.00
U-184	White Harloe 2 date printing faded	NM	110.00
U-473A	Yellow cable emb. PP INC	M	5.00
U-473A	Blue cable emb Chance	M	5.00
U-239B	White Signal emb. B & O	M	10.00
U-503	Brown cable emb. Chance	M	5.00
U-663	Blue cable emb. B	M	7.00
Cutter	Brown small chips		25.00

Silk screen re-
print on heavy
linen paper of
old weather
vane poster.
Many unusual
vanes des-
cribed and
priced. \$6 ea.

HARRIS BOSTON COPPER
WEATHER VANES
AND EMBLEMATIC SIGNS.



Jerry Turner
Box 6651
Gaynor Road
Goshen, OH
45122
Phone: 513-
625-7536

(5)

CD 154	Maydwell, light purple	M	\$7.00
154	McLaughlin 42, emerald	M	10.00
166	California purple	M	10.00
151	H. G. CO., lt. cornflower, blue bubble burst base.	M	18.00
151	H. G. CO., ice blue	M	8.00
106	McLaughlin, black emerald	M	7.00
164	McLaughlin 20, emerald	M	4.00
115	McLaughlin No. 10, lime green	M	6.00
164	Maydwell 20, milkglass	M	5.00
133	W. Brookfield/pat. May 25, 1870-arc lime green, mold over dome	VVNM	8.00
145	N. N., fat style, yellow	M	8.00
142	Hem. TS2, with liner, carnival	M	10.00
252	McLaughlin-62, delft blue	M	25.00
190/91	California deep SCA	M	525.00
260	California, green, pinch groove	M	150.00
133	California, deep SCA	VNM	60.00
210	N. N. California, sage green	NM	10.00
161	California/drips, SCA, drip damage		325.00
161	California/drips, smokey clear, drip damage		325.00
208	California, hot cross SCA	NM	35.00
201	California aqua, fractured & chips		375.00
187	California, SCA	VNM	35.00
187	California, smoke	VNM	35.00
260	California, yellow	NM	150.00
260	California, sage green stress cracks displays mint		35.00
No. 10	California ett, pat. appl'd for, chipped		40.00
No. 15	California egg, deep SCA, chip, displays M		50.00
Porcelain	Mickey Mouse, red brown	M	35.00
Porcelain	Minnie Mouse, white		25.00
123	E. C. & M, cobalt blue	M	425.00
731	N. N.	M	100.00

I will trade any of the above on common silver coins, will give three times face value for dimes, quarters, half dollars, \$4.00 for dollars. I also have a very good porcelain list. 4 stamps please.

Make check or money order to: DEE WILLET
1930 Lucky St.
Bakersfield, CA 93307
Ph. (805) 327-8275

Postage \$1.00 first insulator and 50¢ each one thereafter.

WANTED: Speciality collector wants better types of lightning rod and fence post insulators, glass and porcelain. All letters answered. Contact: Paul Savage, Rapp's Corner, Chester Springs, PA 19475. Tel.: 215-827-7554.

WANTED: Wood side bracket pins and wood cross arms pins. Want hundreds. Please send price and how many you have in 1st letter. Want to make a large display. Daniel F. Stegman, Sr., 2788 Westminster Dr., Florrissant, MO 63033.

Disposing of two large insulator collections. Many hundreds of all colors, sizes and CD numbers, including some threadless. Send a self-addressed 20¢ stamped envelope for lists to R. W. Brown, 1100 Hazelwood, Casper, WY 82601.

7

Blue Bell paper weights, Columbus, Ohio-Pioneer Commerative embossed Bell System (both sides) base embossed with Pioneer emblem-only 2400 made-supply limited \$10.50 post paid. Lynchburg 31, aqua mint \$5.50; Lynchburg 10, aqua mint \$4.50; Lynchburg 30, aqua and grey \$5.00. I buy insulators. Send me your list. Herman Jacobs, 2213-59, Lubbock, TX 79412 (806) 799-4448.

WANTED BY AUTHOR
THIS INSULATOR



"THE GLASS INSULATOR - A COMPREHENSIVE REFERENCE" by Gary Cranfill and Greg A. Kareofelas.

A comprehensive 144 page book plus a price indicator. 600 insulators beautifully photographed. 1200 insulators described and priced with historical information. A must for the beginner or advanced collector. \$6.00 ppd.

GARY CRANFILL

5536 Keoncrest #2, Sacramento, California 95841

(SEND FOR A SAMPLE PAGE)

WANTED by speciality collector--- purple and SCA insulators. Would prefer mint or V. near mint only. CHUCK RICHARDSON, P.O. 67, CHALFONT, PA 18914 (215-822-0252).

Buying Mobile home. Selling excess insulators. Prefer to have you call to see what you get. Prices by "The Book". William B. Thomas, 6 Virginia Ave., Lavallette, NJ 08735. (8)

Insulators for sale and trade, common to unique. Threadless hats including: McMicking, U. S. Tel. Co., Mulford & Biddles in aqua, green, and dark blue. E. R. W., N. A. T. CO., cobalt, E. C. & M's, Cal. Elec. Works, Patent in aqua, ice blue and cobalt. Locke, USA fog bowls, mint \$10.00. McLaughlin, back: No. 19, dark emerald green, NM \$10.00, mint \$15.00. Postage extra. Please send a large self addressed stamped envelope for illustrated trade and sell list. FRITZ KETTENBURG, 2450 FOREST PARK DR., ANCHORAGE, ALASKA 99503 No Phone, 7

BUY, SELL TRADE. Wanted: threadless, rare and unique, Especially want porcelain teapot. Highest prices paid. Call or write. Dieline Coleman, 11206 Winde Lane, Lancaster, NY 14086 (716) 681-5788 9

NEW ADDRESS AFTER JUNE 5, 1974. Paul McManis, 16006 Holdridge Road, Wayzata, Minnesota 55391. New LRB and insulator list available July. 7

WANTED: Pyrex 161, CD 240.5 in light lemon yellow, mint. Write Wes Gordon, 3269 N. Mt. View Dr., San Diego, CA 92116. 6

Selling part of my glass insulator collection. List for list, or S. A. S. E. Wes Gordon, 3269 N. Mt. View Dr., San Diego, CA 92116.

7

Will trade two Maydwell 20 Milkglass, For three Silver Dollars. One Whitall Tatum No. 1 Purple. For one. Postpaid. Dave Fullmer, 18148 Gresham, Northridge, Calif. 91324.

7

CLOSEOUT SALE--THESE PIECES MUST GO! Only one of a kind at this price: CD 104 National, lt. aqua, long vert. flake displays NM+, \$65.00; CD 130.7 CCG, dk. amber, M, \$16; CD 134 Samuel Hnds Tel Fed Mex aqua, VNM, \$35; CD 136.4 No Name, ice blue, base flakes, \$50; CD 143 Montreal Telegraph, ice blue with milk swirl, VNM, \$15; CD 143 Great North Western Telegraph, aqua, (line 894, Milholland '74), VNM, \$35; CD 143 Withycomb, purple, horizontal base to dome, NM+, \$75; CD 152.9 Agee, straw, M, \$15; CD 162 Hamilton Glass Co. isc, \$60; CD 162.4 No Name Royal purple, VNM, \$35; CD 260 California, sage, isc, \$25; CD 317 Chambers, VNM, \$99. Postage extra. 6 page list available. SASE. John McDougald, 4592 Andorra Drive, North Olmsted, Ohio, 44070. 216-779-8232.

7

CALL COLLECT: 215-862-2039

We want rare threaded and threadless
mint or very near near mint.

William P. Cosner
P. O. Box A
New Hope, Penna. 18938

**5th NATIONAL INSULATOR SHOW and
N.I.A. MEETING
JUNE 29 - 30, 1974
HERSHEY CONVENTION CENTER, HERSHEY, PA.
LIGHTNING ROD BALLS WELCOME
GENERAL INFORMATION**

Totally Air-Conditioned, Parking for 700 plus. - Cars, Camp grounds situated in Hershey area,
Over 1,300 First-class accommodations within 10 minutes of convention center, Many Out side
Activities.

**SCHEDULE
FOR WEEKEND**

June 28 Dealers Set-Up 5:00 P.M. (Lower Level)
June 29 Dealers Set-Up 6:00 A.M. (Lower Level)
Open to General Admission - 8:00 A.M. - 5:00 P.M.
Saturday Nite - Cocktail Hour 6 - 7:00 P.M.
Dinner 7:00 P.M. (Sit-Down)
N.I.A. Meeting 8:00 P.M.
(In Adjoining Rm.)
No Admission Charge
Open to people interested in Collecting
June 30 Open to General Admission 8:00 A.M. - 5:00 P.M.

GENERAL ADMISSION PRICE

50¢ per person
Under 8 years old FREE

Security Guard provided both Friday and Saturday Night
Ribbons to be awarded for displays by Crown Jewels, Cross Arms and
O B X. in following categories:

1. Lighting Rod Balls
2. Threadless
3. Best in Porcelain
4. Best in Color
5. Best in Shape

Show Trophy Awarded for Best Overall

Send Check or Money Order payable to: MR. STEPHEN E. BOBB

250 8' x 30' Tables Available Price \$20.00 per table
Table Covers Provided

Free Display area, but space is limited!

CHOICES FOR DINNER

SATURDAY NIGHT

- | | | |
|----|--|--------|
| 1. | Roast Top Sirloin of Beef, Jardiniere | \$7.60 |
| 2. | Baked Halibut of Steak with Shrimp Sauce | \$7.60 |

Price Includes: Appetizer, Two Vegetables, Salad and Dressing, Roll and Butter, Beverage and Dessert

NOTICE

1. Please specify number of tables which you want reserved.
2. On dinner reservations please specify how many people and which meal you select.
3. If you wish to display please specify which category.

LET'S ALL MAKE THIS THE FINEST SHOW EVER!!!!

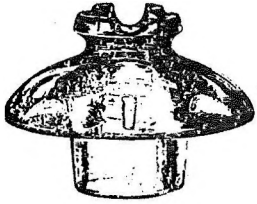
SEND TO

MR. STEPHEN E. BOBB
610 Northampton Road
Norristown, Pa. 19401
Phone: 1-215-539-6533

Come to Hershey ---- attend the biggest and best National Show yet.

Attend the N.I.A. meeting Saturday night, and help form your National Organization.

Visit Pennsylvania's Antique Shows, some of the insulators that have come from Pennsylvania are: Busby---Emminger---B, F, G. --- Brookfield---Hawley---B, G, M. CO. ---McKee---Duquesne---M & E CO. Phila. ---P, L, W. ---Sterling---Harloe---Brooks--- and many more.



3rd ANNUAL
 El Paso Insulator Club
 COLLECTOR'S SHOW

BUY SELL
 TRADE

INSULATORS
 BOTTLES
 RELICS

July 27-28

Save on Gas Plan Your Vacation Around Us



75 TABLES
 \$7.50 one day
 \$15.00 two days

NATIONAL GUARD ARMORY
 9100 Gateway-N
 & Hondo Pass

BOB KEYES
 1032 Burgess
 El Paso, Texas
 (915) 598-3212

WANTED TO BUY -- All sellable telephone insulators, semi to rare. Best prices paid. Brad & Nancy Cook, 507 Ridge Rd., Lansing, NY 14882. Call (1) (607) 533-7515

CD	FOR SALE OR TRADE	(6)
125	Hemi WU No 5-Pat 5/2/1893, sdp, aqua, M	\$6
205	Hemi 55, aqua, M	4
219	Hemi 660 - Lowex, amber, M	6
210	Postal, aqua, M	4
462	PRR, B on skirt, aqua, M	4
205	Brookfield, aqua (in. sk. ch) outside M, VNM	5
167	Armstrong, 51C1, amber, M	5
217	Armstrong, 51C3, amber, M	5
272	Armstrong, 511A, dark red amber, M	4
272	Whitall Tatum, 511A, dark red amber, M	4
216	Whitall Tatum, 512A, amber, M	5
Postage paid on 2 or more. Tony Petrarca, 5144 Mayview Rd., Cleveland, OH 44124, (1) (216) 442-7926		

HAROLD E. DOWNING
GRANT CITY, MO 64456
Ph. 1 816 564 2294

Because of a Heart condition I have decided to sell (only) my TRANSPORTATION COLLECTION, and others. Reference by Milhollands. 3 days return privilege for refund. Allow time for checks to clear. Postage paid over \$50.00 orders, otherwise add \$1.50 per selection. Please send SASE to return sold orders. All are Mint unless stated. CD and line is used to help.

102	line 13 & 23 Brookfield, Aqua different Emb. VNM (4)	\$ 6.00
102	line 25 B.G.M. Co. Purple VNM	15.00
102	line 33 C.G.I. Co. Purple	5.00
102	line 60 S.F. Yellow-Green VNM	3.00
102	line 67 Sterling (B) & Aqua NM	10.00
104	line 80 Brookfield Aqua small grove chip on back	5.00
104	line 85 & 88 New Eng Tel & Tel Green & Ice Bl. both	8.00
106	line 144 W.G.M. Co. Purple VNM	10.00
112	Star yellow-green NM	5.00
114	line 220 Hemingray No. 11 DP Aqua NM	5.00
120	line 257 A instead of B Aqua chipping Base & Groove	3.00
120	line 258 (No Name) Lt. Green	5.00
120	line 263 (No Name) Aqua Some Minor Drip Damage	10.00
121	line 271 Am. Tel. & Tel. Co. Jade Flakes on Base some dings	5.00
121	line 271 AM. TEL. & TEL. CO. Purple NM	5.00
121	line 321 Pleated Skirt Lt-blue	10.00
121	line 323 O.V.G. CO. Aqua	7.00
121	line 329 W.G.M. CO. Purple (1)Mint (1) NM Both for	13.00
125	line 389 Pat APP FOR WU5 Deep Blue	25.00
125	line 386 Patent Dec 18 1871 WU5 Yellow-Green	15.00
126	line 393 Brookfield Dk Lime Green VNM	15.00
426	line 410 (1) Blue with base bruise (1) Aqua Dings Both	12.00
426	line 409 (American) Milky Crushed Ice effect inside VNM	18.00
127	line 416 Brookfield Aqua 3 small dings	8.00
427	line 429 Brookfield (regular 4) Lt. Yellow-Green VNM	15.00
427	line 432 A, U. 1 Pat Dec 19 1871 (3) small chips Reverse	35.00
433	line 535 (No Name) 2 sizes with 1 much larger VNM Both	15.00
133	line 502 E.R. Aqua VVNM	6.00
143	line 630 Canadian Pac. Aqua some Horiz. ridges chipped	32.00
143	line 638 Dwight Aqua Bubble Burst on Base	6.00
145	line 672 B-B Purple	10.00
145	line 707 G.N.W. TEL CO Purple Small Bubble Burst Rev.	8.00
145	line 733 Lunchburg Aqua Rev. Base & Pett. Damage	6.00
145	line 740 O.V.G. Co. Lt.-Green	8.00
145	line 742 Postal Purple 1 small Ding	10.00
145	line 751 W.G.M. Co. Purple Small Base Flake	10.00
157	line 876 Hemingray No. 38 Aqua	8.00
161	line 927 Star Drip Points Aqua	20.00
162	line 957 Hemingray Golden Amber	15.00
162	line 960 Hemingray Dk-Amber 3 drips chipped inside	9.00
162	line 966 Hemingray Med-Amber Small Base & Groove chp	6.00
162	line 975 H.G. CO. Peacock-Blue	20.00
162	line 1011 Star (same shape but no Drips) Yellow-Green	10.00

cont'd.

163	line 1028 Hemingray Clear	5.00
164	H. G. Co. (B) Petticoat SB Lt-Lime VNM	5.00
187	line 1163 and CD 188 line 1165 The Both VNM	15.00
257	line 1390 Mickey- Peacock Blue with Milky Swirls	80.00
260	line 1403 California Sage 2 Small ear Chips	30.00
260	line 1404 California Yellow VVVNM	125.00
261	line 1407 Cable Dk-Aqua 2 sets Threads	40.00

The rest are all Transpositions, some are VERY RARE and are needed to complete a specialized set. Look them over carefully, for you might overlook the one you need.

116	line 241 Brookfield-Aqua Cracked around Dome, Flake	8.00
116	line 242 No Name- Chipped upper Groove, and on Base	35.00
416	line 245 B-B-, Blue 2 Base chips & Center Ridge Chip	65.00
416	line 247 Ampersand- Aqua	30.00
190/91	line 1167 A. T. & T. Co. Aqua	9.00
190/91	line 1168 AM. TEL & TEL Co. Two Piece Trans, Aqua VNM	10.00
190/91	line 1171 B- Emerald-Green chipped at Pinhole	18.00
190/91	line 1170 B-Dk Aqua	15.00
191	B- Top only Olive-Green 3 small dings	10.00
190/91	CALIFORNIA Purple Small Bubble Burst on Base of Top Half, Small Bubble Burst on Wire Groove and Flake on Base of Bottom Half. Displays Near Mint or Better	450.00
190/91	line 1174 Diamond-Lt. Aqua, Bubble Burst 191 Base	12.00
190/91	line 1175 Diamond- Dk Purple VNM	30.00
190/91	line 1175 Diamond- Lavender Bruise & Flake 191 Base	18.00
190/91	line 1175 1/2 Diamond-Smoke Lt Roughness at Pinhole	20.00
190/91	line 1179 K- Aqua Some chips on Base of 191 Bottom has Chipping on Base & Pinhole RARE	65.00
190/91	line 1181 Knowles (Prism) Aqua VNM	45.00
190/91	line 1181 Knowles (Prism) Bottom is Gr. Aqua with Minor Flake above Groove (Top) Olive-Gr. M	55.00
190/91	line 1183 PRR-Dk Aqua	100.00
190/91	line 1184 Two Piece Transposition	10.00
192/93	(No Name) Aqua. This is a much smaller than the 190/91, The Grooves are 5/16th of an inch wide or less. This has some chips off of the Pinhole (Displays Mint). I Have saw Tops, But only 3 complete ones. Best Bid over \$75.00 two weeks after Publication	
194/95	Hemingray 54 A & B Purple	30.00
196	line 1189 B- Aqua Chipping upper & lower drips	30.00
196	line 1189 B-Emerald Green Some Bruises But no Drips are Completely gone. Beautiful Condition	85.00
196	Hemingray No. 51 and Hemingray on Shoulder-Aqua Bruise on Shoulder and dings	45.00
196	H. G. CO. No. 51 Pat May 2 1893 Aqua Crack on Base, Bruises and Chipping upper & lower Shoulder	30.00
196	H. G. CO. Pat. May 2 1893, Patent Applied For on Shoulder Aqua Bruise on Base	45.00
196	H. G. CO. Pat. May 2 1893 Lt. Aqua Bruises with Drips missing on the Shoulder	10.00

cont'd from preceeding page

196	H. G. CO. Pat May 2 1893	Aqua VNM	25.00
196	H. G. CO. Pat May 2 1893	Grayish Purple This is turning Purple, a very pretty Color. Small Chip under the Shoulder very few Drips chipped. Displays NM	275.00
196	No Name some chipping	Shoulder and Base Aqua	20.00
196	O. V. G. CO.	Aqua No Drip Points VNM (RARE)	350.00
197	Hemingray 53	Clear, and Straw Mint Both for	6.00
197	Line 1199	Whitall Tatum No. 15 Off Clear Mint	8.00
199	line 1201	Knowles (Prism) Blue Chipping under Shoulder on Reverse and Flake above Prism	60.00
200	CALIFORNIA	Purple A Nice Color MINT	210.00
200	No. 2 Trans	DRIP POINTS Aqua 3 dings some drip damage Another RARE one.	130.00
200	Star	Green Aqua Couple Dings and 2 Base Flakes	65.00
200	No 2 Trans.	NDP Aqua	20.00
200	Star	Blue Shoulder Bruise and Samll Bubble Burst	75.00
201	Line 1210	Hemingray No. 2 Aqua Base Chip	12.00
201	CALIFORNIA	Green Small Chipping Front Shoulder, on Back Shoulder 4 larger Chips. 2 Dings on Rev. Dome, and Bruise on Reverse Base. Displays Near Mint. Try to Find One for any Less	550.00
202	No Name No. 51	Dk Aqua Ding on Dome Bubble Burst	50.00
202	Hemingray No. 53	and Faint 14-Pat May 2 1893 Aqua DP Couple Base Chips, also 2 on Grooves	20.00
202	Line 1214	Hemingray- Gr. Aqua 3 Dings couple Shoulder Chips and Base Flakes	12.00
202	Line 1214	Hemingray- Dk Aqua Base Chips on Reverse	15.00
202	Line 1215	Hemingray - Blue VNM	6.00
202	K -	Aqua Crack around Base, but Solid	15.00
202	K-	Yellow Green 2 Large Dings and Samllr Mostly on Reverse. Will Display VNM	45.00
202	Line 1218	Fred M. Locke (No No. 14) Pale Aqua VNM	15.00
202	Line 1218	Fred M Locke No. 14 Aqua VNM	15.00
202	Line 1219	(No Name) No. 14 Dk Aqua	18.00
203	Line 1221	Armstrong- Clear, Off Clear Mint, and a RARE Color Pink Mick on Dome all For	12.00
203	Line 1223	Hemingray 56 Straw	3.00
203	Line 1224	Kerr- Gray	4.00
204	Line 1225	F. M. LOCKE (CROSS TOP) Aqua 1 small Flake on Reverse Dome other Than That VNM RARE	350.00
205	Brookfield-	Green VNM	9.00
205	Brookfield No. 3	Trans Aqua VNM	11.00
205	Brookfield No. 53	Green	30.00
205	Brookfield No. 53	Green Pett. Chip 2 Bruises Groove	18.00
205	Brookfield No. 3	Dk Olive Green NM	20.00
205	Gayner No. 530	DP Pale Aqua Gr.	17.00
205	Hemingray 55	Blue DP Dings Dome & Base Chip	15.00
205	Lynchburg No. 53	Aqua NDP VNM	30.00
205	Lynchburg No. 530	Blue Aqua DP	18.00
205	Lynchburg No. 530	Blue Aqua DP VNM	15.00

Thank You Very Much

6. In order to keep CROSS ARMS up to date we would like all reports on shows and swaps sent in no later than 45 days after the show has taken place.

ADVERTISING RATES:

DISPLAY ADS:

1/4 page - \$5.00 per issue
* \$12.00 per three issues

1/2 page - \$10.00 per issue
* \$25.00 per three issues

Full page - \$18.00 per issue
* \$45.00 per three issues

\$.05 per word (minimum \$1.00). The closing date for material will be the 8th of the month preceding the month of the issue.

Ads received too late for the deadline will be run in the next issue.

CROSS ARMS encourages want ads that list the value of the insulators advertized so any ad listing 10 or more insulators with prices will receive an additional one month's free exposure.

**CROSS
ARMS**

367 Signal Hill Road
King of Prussia, Pa.
19406

RETURN POSTAGE GUARANTEED

BILL LOVELY
40 YARNTON CRESCENT
REGINA, SASK, CANADA S4R 4A2
10/74

Second Class Postage
PAID
Norristown, Pa.